

reserved for royalty

VENUS[®]

welcoming you to experience an unmatched lifestyle of elegance and exclusivity

pashmina

4 & 5 bhk regal apartments



everything you've ever imagined

venus brings up the unique, elevated and spectacular living space named "pashmina" in the heart of modern-day ahmedabad. this contemporary architectural marvel will truly infuse urbanity and sophistication in the form of art. the punctilious attention to these expansive residencies will truly redefine the luxury living standards of the city. exuberant, light-filled living space, spectacular scenic city views from the verandah, adorable king-sized suites and master suites, discrete servant space, 2 utility kitchens, the enormously sized entire podium-leveled floor of amazing amenities, beautiful landscaping and many other exceptional features will rightly offer an exquisite living experience of pashmina. pashmina will prove to be a timeless benchmark of its kind.

soak yourself in the grandeur of pashmina

with a pleasing slab-to-slab height of 11'-4", each extensive home will fortify the sense of spaciousness. the design has been carefully curated in such a way that the living, dining, kitchens and drawing room seamlessly get integrated with the spectacular views of the large verandah. this boundless planning creates harmony and redefines the expanse into grand and even beyond it.

rich materials leave a lasting impression

the selection of the materials and their interplay in the design has a very significant role. rich materials truly enliven the aesthetics of interior space. in pashmina, the fineness of the project is delightfully enhanced by the rich materials. in this project, we have often played with italian marble, granite, exotic granite, vitrified and designer tiles for giving an immaculately refined interior ambience.



landscaped sanctuary

escape from the bustles of the city and revive yourself in a pure and peaceful setting of nature. the thoughtfully designed landscaped open lawn is placed such that it can be easily accessed and perfectly utilised from the surrounding amenities like a jogging track, multi-purpose court, sports cafe' bar, fitness centre, indoor play area, theatre, library, hobby room, barbeque area, yoga, event green room and pre-function space.



project details

land

7289 sq.mt. / 78459 sq.ft.

levels

5 levels of parking

1 level Club with Luxury Amenities

19 floors of Residential Apartments

luxury

4 and 5 bhk

luxurious apartments & penthouse

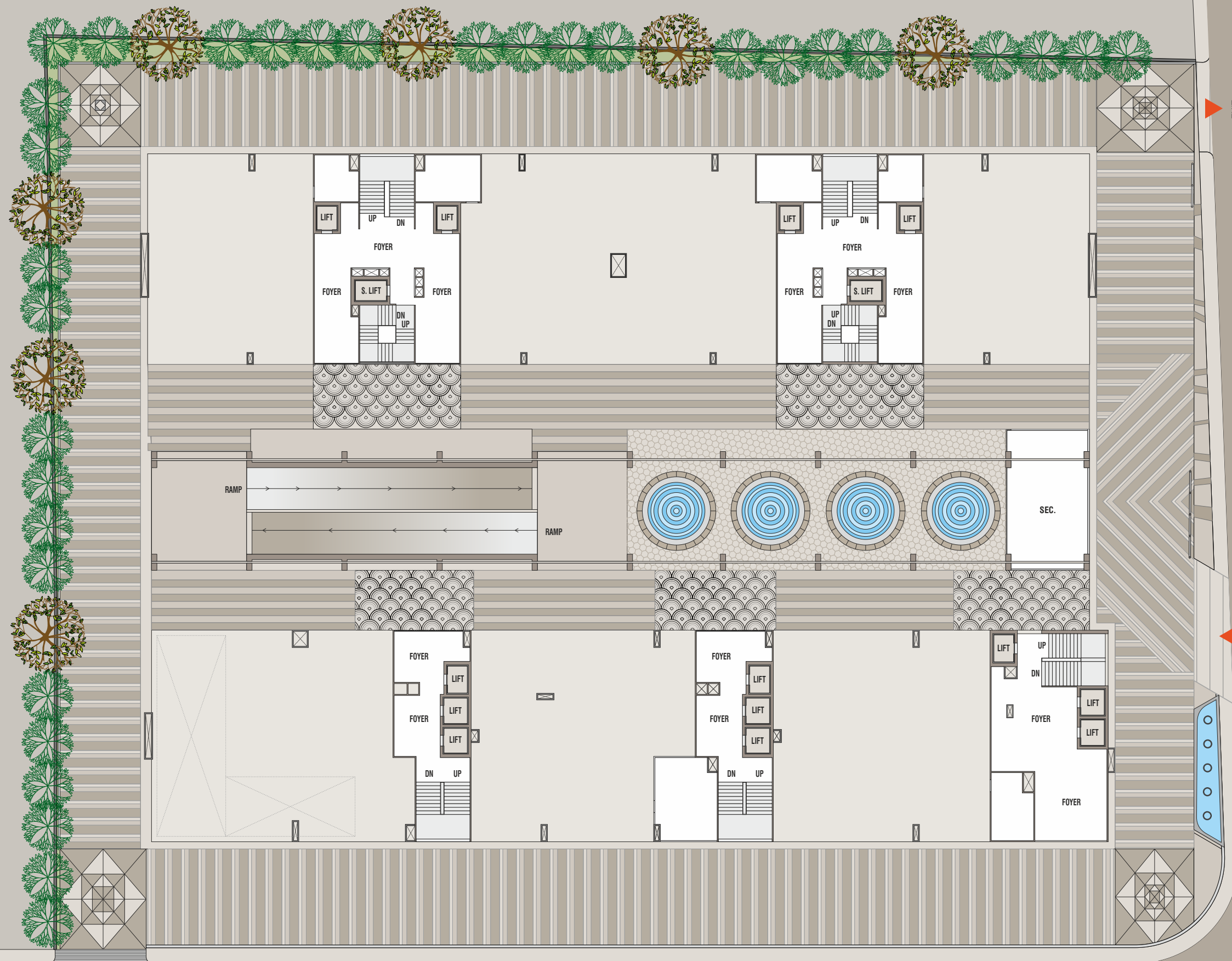
duplex options available



layouts



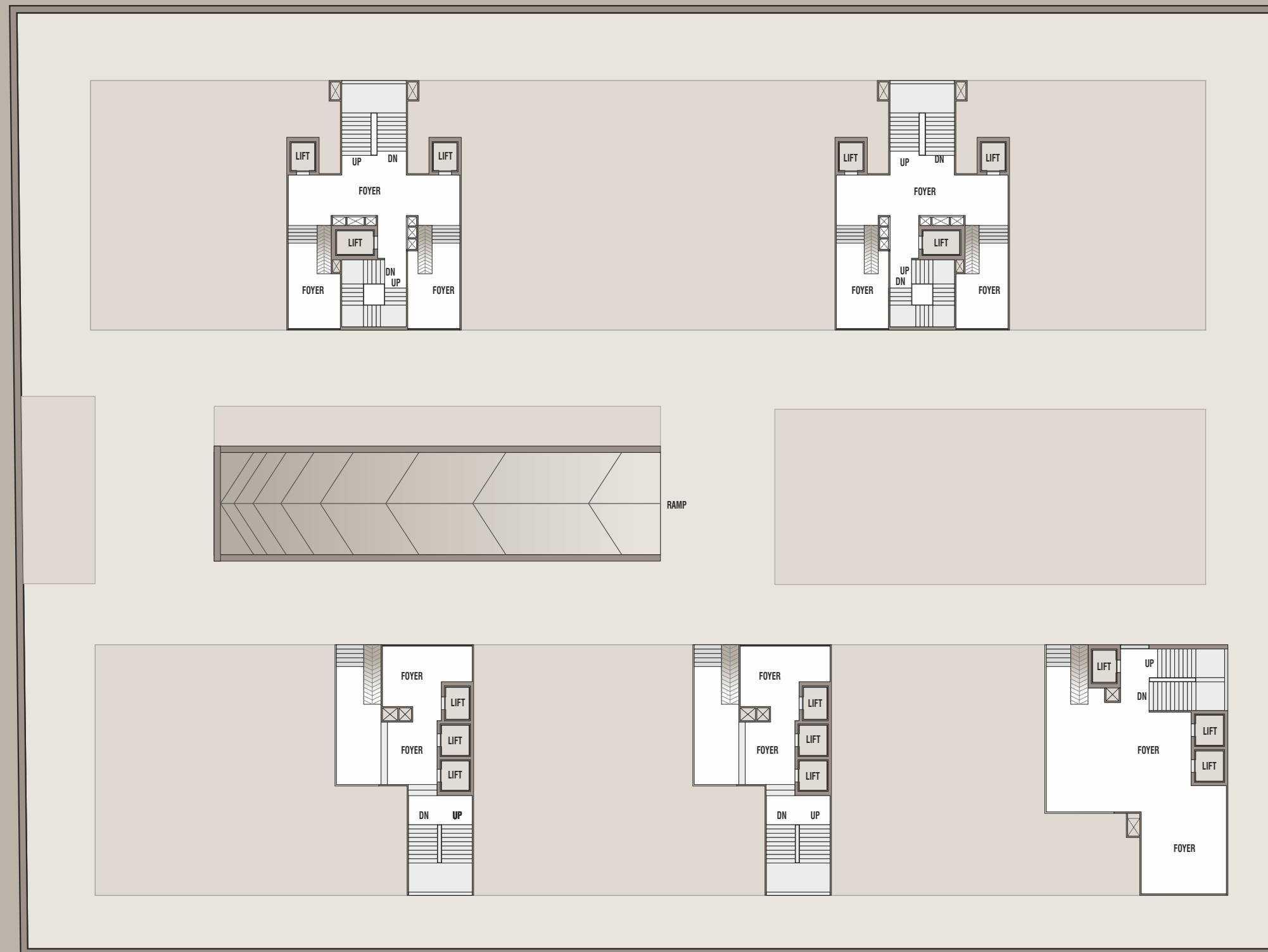
ground floor



18.00 MT. WIDE ROAD

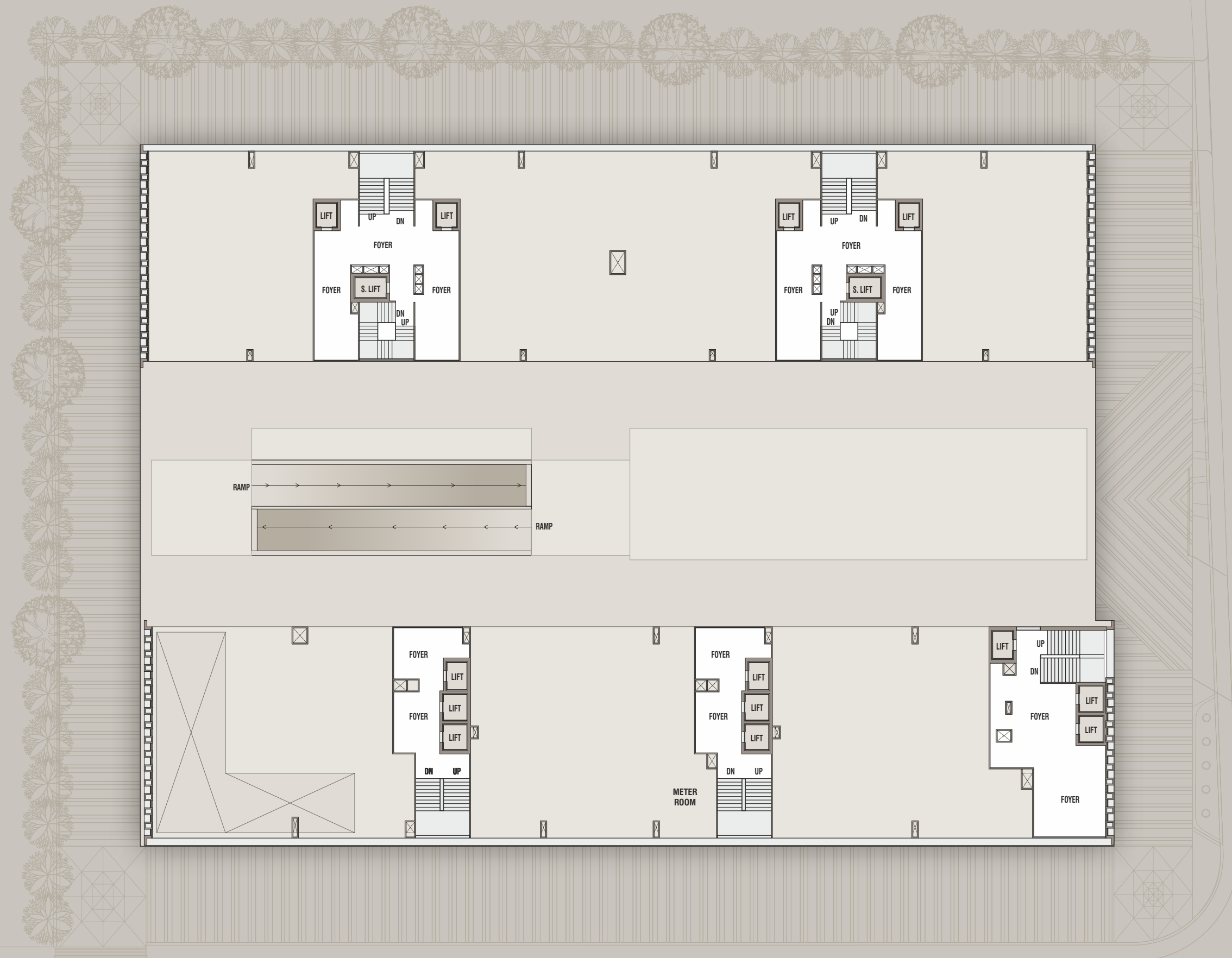


basement 1 & 2





podium level 1 & 2

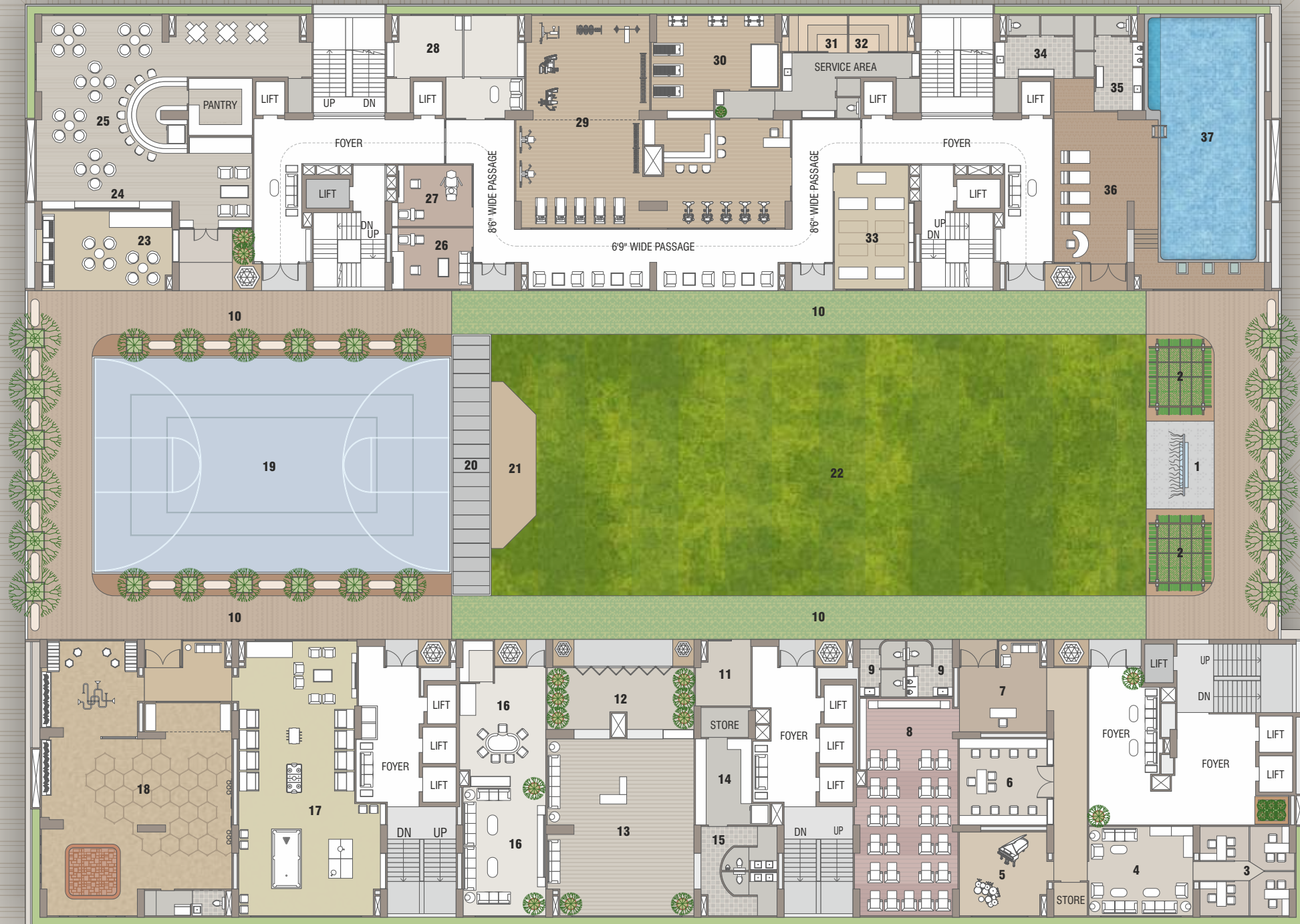


no. space

- 1 decorative fountain
- 2 gazebo
- 3 work from home cubicles
- 4 library/ reading lounge
- 5 hobby room
- 6 management office
- 7 library
- 8 private theatre
- 9 common toilet
- 10 walking / jogging track
- 11 store
- 12 pre function zone
- 13 ballroom / banquet
- 14 kitchen/pantry
- 15 banquet wash room
- 16 music room
- 17 indoor games
- 18 kids play area
- 19 multi game court
- 20 play station maze
- 21 performance area
- 22 club lawn
- 23 barbeque zone
- 24 sports screening
- 25 sports café
- 26 salon
- 27 event green room
- 28 luxury spa
- 29 fitness center
- 30 pilates / crossfit
- 31 steam bath zone
- 32 sauna bath zone
- 33 yoga / zumba studio
- 34 f. rest room
- 35 m. rest room
- 36 open deck
- 37 proposed waterbody

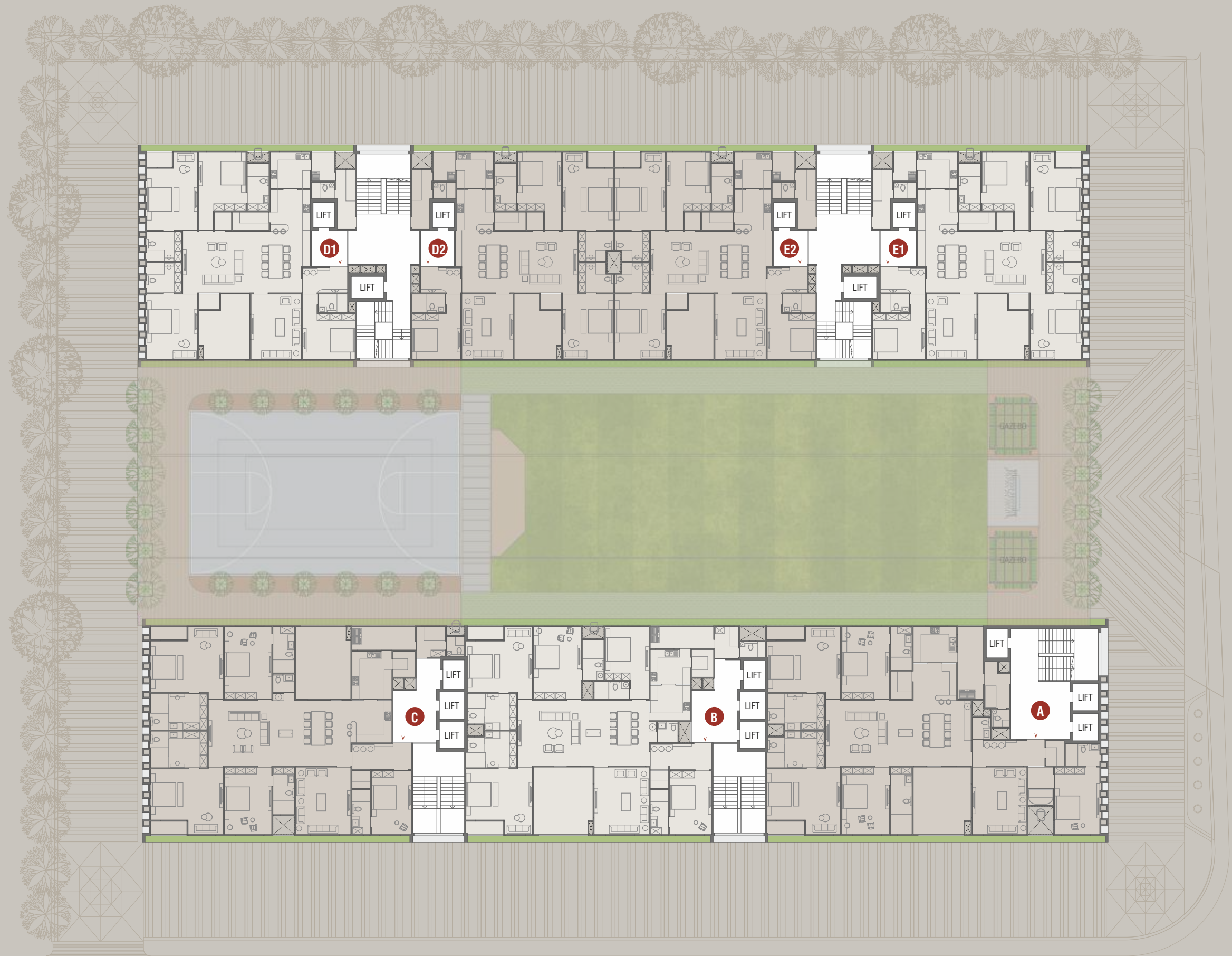


podium / club level





typical floor



striking spaces

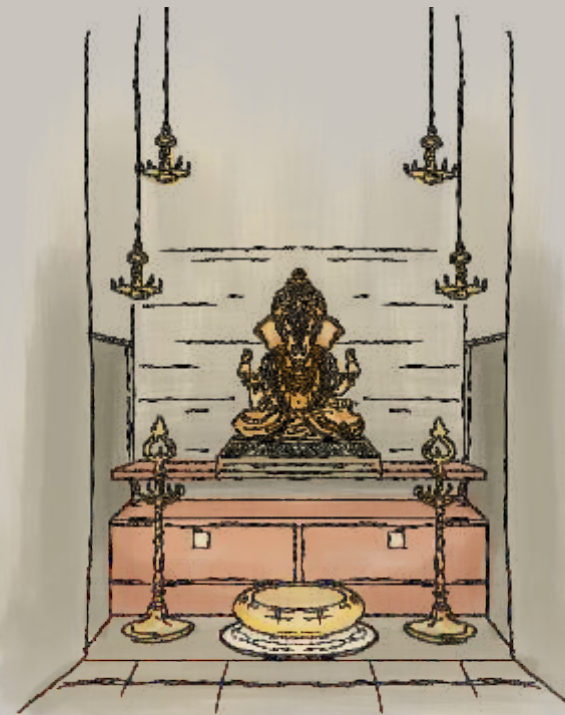


elevator
all elevators with access control system

personal foyer
italian marble / exotic granite

staircase
granite

puja room
italian marble / exotic granite

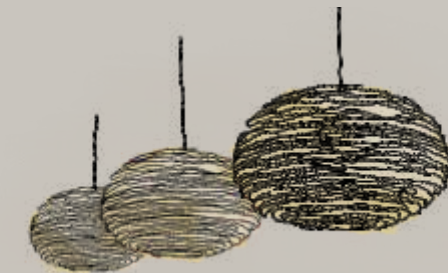


doors
main door – panelled interior door with veneer
other doors – flush door with veneer / laminate / WPC
sill – granite; jambs – granite / WPC / wooden

vestibule & shoe room
italian marble / exotic granite

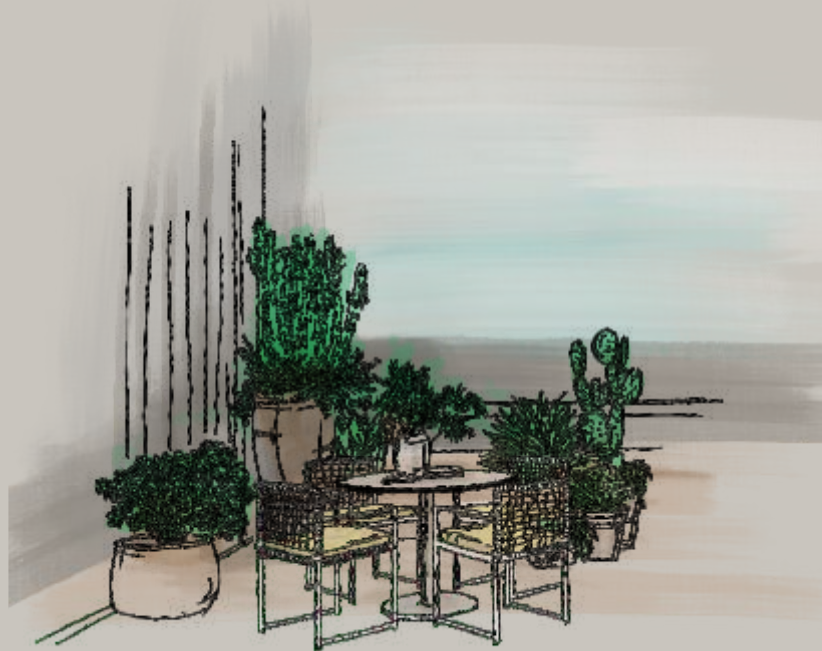
windows
double glazed unit (DGU) glass -aluminum /
UPVC sliding windows

drawing
italian marble / exotic granite



HVAC
leading edge centralized
air conditioning VRV systems
of daikin / mitsubishi or equivalent

living and dining
italian marble / exotic granite



wall finish

POP punning for internal apartment
texture with acrylic paint for balcony / deck
texture / cladding / glazing as per elevation

balcony

italian marble / exotic granite

deck

italian marble / exotic granite /
designer tiles / deck floor



kitchen

kitchen platform and sink

wash area

granite

kitchen

italian marble / exotic granite

toilet
ultra contemporary design top of the line CP fittings and
sanitary ware modular glass cubicle for shower area

powder room

italian marble / designer tiles

servant toilet

vitrified tiles / granite



electrical and ELV
contemporary modular switches

all bedrooms

italian marble / exotic granite

servant room

vitrified tiles / granite



hot water supply

individual centralized heat pump for each apartment

all dress and toilets

designer tiles / italian marble / exotic granite

linen store

italian marble / exotic granite

store

italian marble / exotic granite / granite



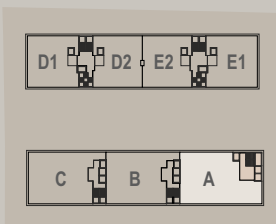
5 BHK units

A

UNIT PLAN

Carpet Area
4256 Sq. Ft.

Indicative S. A.
7740 Sq.Ft.



5 BHK



UNIT PLAN

Carpet Area
3782 Sq. Ft.

Indicative S. A.
6876 Sq.Ft.



5 BHK

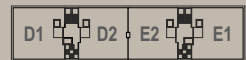


C

UNIT PLAN

Carpet Area
4096 Sq. Ft.

Indicative S. A.
7452 Sq.Ft.



5 BHK



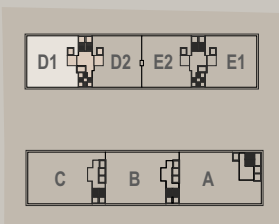
4 BHK units

D1

UNIT PLAN

Carpet Area
3010 Sq. Ft.

Indicative S. A.
5472 Sq.Ft.



4 BHK

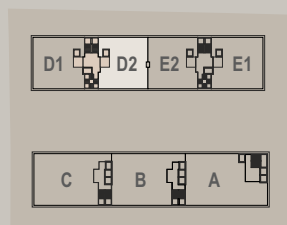


D2

UNIT PLAN

Carpet Area
2896 Sq. Ft.

Indicative S. A.
5265 Sq.Ft.

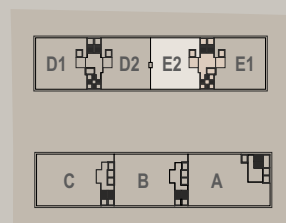


4 BHK



Carpet Area
2896 Sq. Ft.

Indicative S. A.
5265 Sq.Ft.



4 BHK

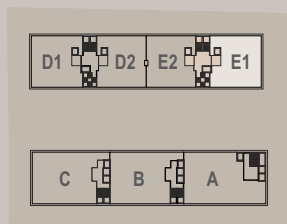


E1

UNIT PLAN

Carpet Area
3010 Sq. Ft.

Indicative S. A.
5472 Sq.Ft.



4 BHK



location



pashmina

behind rajpath club, bodakdev, ahmedabad, gujarat 380054



RERA NO. : PR/GJ/AHMEDABAD/AHMEDABAD CITY/AUDA/RAA08400/030521
www.gujrera.gujarat.gov.in



VENUS[®]

1101, venus amadeus, jodhpur cross road, satellite, ahmedabad- 380015.

74520 74520 info@venusinfrastructure.com



DISCLAIMER

1. The brochure is for the easy presentation of the Project. It should not be considered as a part of the legal documents. For further information regarding the Project, the Member/ customer is requested to check the details on RERA website or at the Developer's office before going ahead with the booking.
2. The furniture and fixtures, electrical appliances and other loose items shown in the brochure are only for illustrative purposes and do not form a part of the standard product on sale. The furniture Layout shown in the brochure is only suggestive and subject to change as per site conditions and as per the instructions of the Project Architect.
3. The Promoter/ Developer reserves the right to make changes in the Project, its amenities and specifications as may be suggested by the Project Architect or the Structure consultant and any such changes made shall be binding on the customers/ members of the Project.
4. The Promoter/ Developer reserves the right to make minor on-site changes during the course of construction and such changes shall be binding on all the members/ customers of the Project.
5. The dimensions shown in the brochure are approximate and calculated from unfinished surfaces and are rounded off to nearest whole number. The carpet area mentioned is calculated as per the provisions of the RERA Act with the help of AutoCAD software.
6. The images (interior and exterior views) in the brochure are computer simulated graphics for representational purpose and are subject to errors and omissions. The images used may be stock images or images based on the architectural plans of the Project. They shall not be construed as actual depictions of the Project.
7. The north direction shown in the brochure is approximate and can be erroneous. The Member/ Customer is expected to verify the same personally before going ahead with the booking.
8. The Key Plan in the Brochure is not to scale and does not depict the exact location of the Project or the connecting road network or other abutting structures or landmarks. It is only for representation purpose and gives a rough idea about the approximate location of the Project. The Member/ Customer is requested to visit the Project site and check the physical location of the Project site and check the physical location of the Project and its surroundings before going ahead with the booking.
9. All the details, specifications, facts and figures mentioned are used for information purposes only and are subject to modifications.
10. Subject to Ahmedabad Jurisdiction