



# ईकॉप्रस्थ Saptak

---

**3 & 4 Bhk Apartments & Showrooms**

@ Naranpura





Artist's Image



# GROUND FLOOR PLAN



40.23 MT T.P.S. ROAD



12.19 MT T.P.S. ROAD



# TYPICAL FLOOR PLAN



40.23 MT T.P.S. ROAD



12.19 MT T.P.S. ROAD





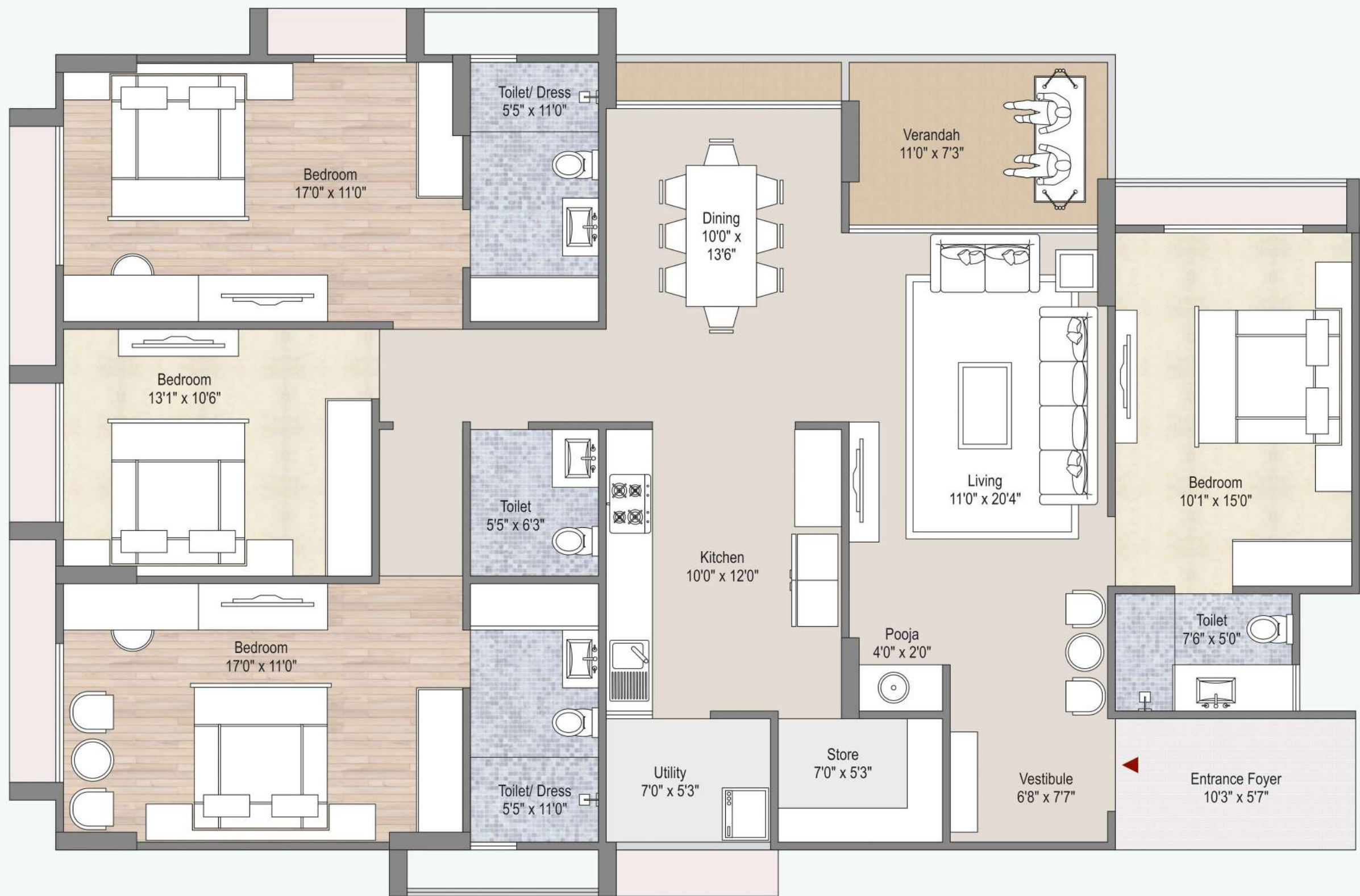
INDRAPRASTH  
SAPTAH

Artist's Image



4 BHK  
UNIT PLAN

A | B | C



3 BHK  
UNIT PLAN

D | E | F





3 BHK  
UNIT PLAN

G | H







Artist's Image



# PROJECT ATTRIBUTES

## SALIENT FEATURES

- 2 Master Bedrooms
- Lavish Balcony
- Wooden flooring in Master Bedrooms
- T.V. Cable Points in Drawing room & Master bedrooms
- Quality Doors with frame
- Double-Charged Vitrified Tiles in Drawing, Dining, Kitchen and Passage Area, Bedrooms
- Granite Platform

## BATHROOM FEATURES

- Separate dry/ Wet area in Master Bathrooms
- Good quality Sanitary ware, CP Fitting & Tiles

## SECURITY FEATURES

- 24 x 7 Security Service
- VDP (Video Door Phone) for extra safety at your door step

## GENERAL FEATURES

- 2 High Speed Automatic Elevators of renowned brand
- Concealed 3 Phase Power supply with adequate points as per architects design

### Terms & Conditions

- All the architectural and interior images in the brochure, are merely simulated interpretations using computer graphics to enhance the customer understanding and are not factual images.
- The colour and general appearance of the flooring and wall tiles, sanitary ware & fittings, walls, ceilings, windows, doors, internal roads, trees, shrubbery etc. shown in the simulated computer graphics images are taken from the object libraries for the purpose of presentation and the prospective buyers of the concerned property are advised to refer to the construction specifications mentioned in the brochure. Additional amenities and/ or utilities not mentioned or shown in the brochure but may be required as per the law, should be deemed to be forming part of the project by the purchaser.
- All Furniture including wardrobes, other sofa furnishings inter-alia curtains, mattresses, bed linen, upholstery etc., lights and other electrical fixtures and appliances like air conditioners, refrigerators, TV's, telephones, laptops etc., any of the equipment, household accessories inter-alia crockery and cutlery, rugs, carpets, decorative pieces and wall hangings, wall papers, utensils etc., apparels and all other consumable and movable items shown in the simulated images do not form part of the sale of any property by the developer.
- All dimensions presented herein are approximate and the measurements are made from unfurnished surfaces.
- Dimensions are unfinished wall to wall and approximation of 5 cms
- This is not an offer/ an invitation to offer and/ or commitment of any nature. The Information contained is of the kind of development that is proposed and issued in good faith and is for guidance only.
- All rights reserved with the developers to make any changes in the project and all the members shall abide by such changes.
- GST, AMC/ AUDA charges along-with Torrent electrical charges including cable and Sub-station cost shall be borne by purchaser. Stamp duty, registration charges, or any other charges and taxes as & when levied by government or any of its body shall be borne by purchaser/buyer/legal possession holder.
- GST at applicable rate is payable on the due amount and is non refundable.
- This brochure is for restricted private circulation only and is for an easy display of the project. It should not to be considered as a legal document with obligations for specific performance. It is meant for the purpose of conceptual presentation only.
- Subject to Ahmedabad Jurisdiction only.



# LOCATION

NOT TO SCALE



## DEEP GROUP OF COMPANIES

### DEEP BUILDERS

10th Floor, President House, Opp. C N Vidhyalaya  
Ambawadi, Ahmedabad - 380 006.

Contact: 079 2644 6232/ 33

Web: [www.deepgroup1980.com](http://www.deepgroup1980.com)

### SITE ADDRESS:

## INDRAPRASTH SAPTAK

B/s. Sahajanand Tower, Nr. Shell Petrol Pump  
Nr. A.E.C. Cross Road, Naranpura, Ahmedabad-380013.

Contact No.: +91 90991 99702



PROJECT BY:

