

RERA Registration No. PR/GJ/AHMEDABAD/AHMEDABAD CITY/  
Ahmedabad Municipal Corporation MAA16636/240326/071131  
<https://gujrera.gujarat.gov.in>



# A CLASS ABOVE



This project is developed by Godrej Properties Limited, in the name and style of "GODREJ ALTUS" having RERA Registration No. PR/GJ/AHMEDABAD/AHMEDABAD CITY/Ahmedabad Municipal Corporation/MAA16636/240326/071131 available at <https://gujrera.gujarat.gov.in>. GODREJ® is a registered trademark. The same may not be used by any means or in any forms whatsoever without written permission. Any unauthorized use of the same shall constitute trademark infringement and will be subject to legal action in accordance with applicable laws. The allotment is subject to terms of the application form, allotment letter, agreement for sale, sale deed and other related documents. All specifications of the units shall be as per the final agreement between the parties. Customers are advised to appraise themselves of the necessary and relevant information of the project prior to making any purchase decisions. The images shown are artist's impression/stock images. The details shown in the images and representations made herein are only indicative in nature/approximate in nature and are only for the purpose of illustrating/indicating a possible layout of the Project/Unit and do not form part of the standard specifications/amenities/services/to be provided in the Unit/ Project. The applicant shall make themselves fully aware of all the necessary and relevant information prior to signing of the application form. T&C apply. The official website of Godrej Properties Limited is [www.godrejproperties.com](http://www.godrejproperties.com). Please do not rely on the information provided on any other website.



# CRAFTING LANDMARKS ABOVE THE SKYLINE

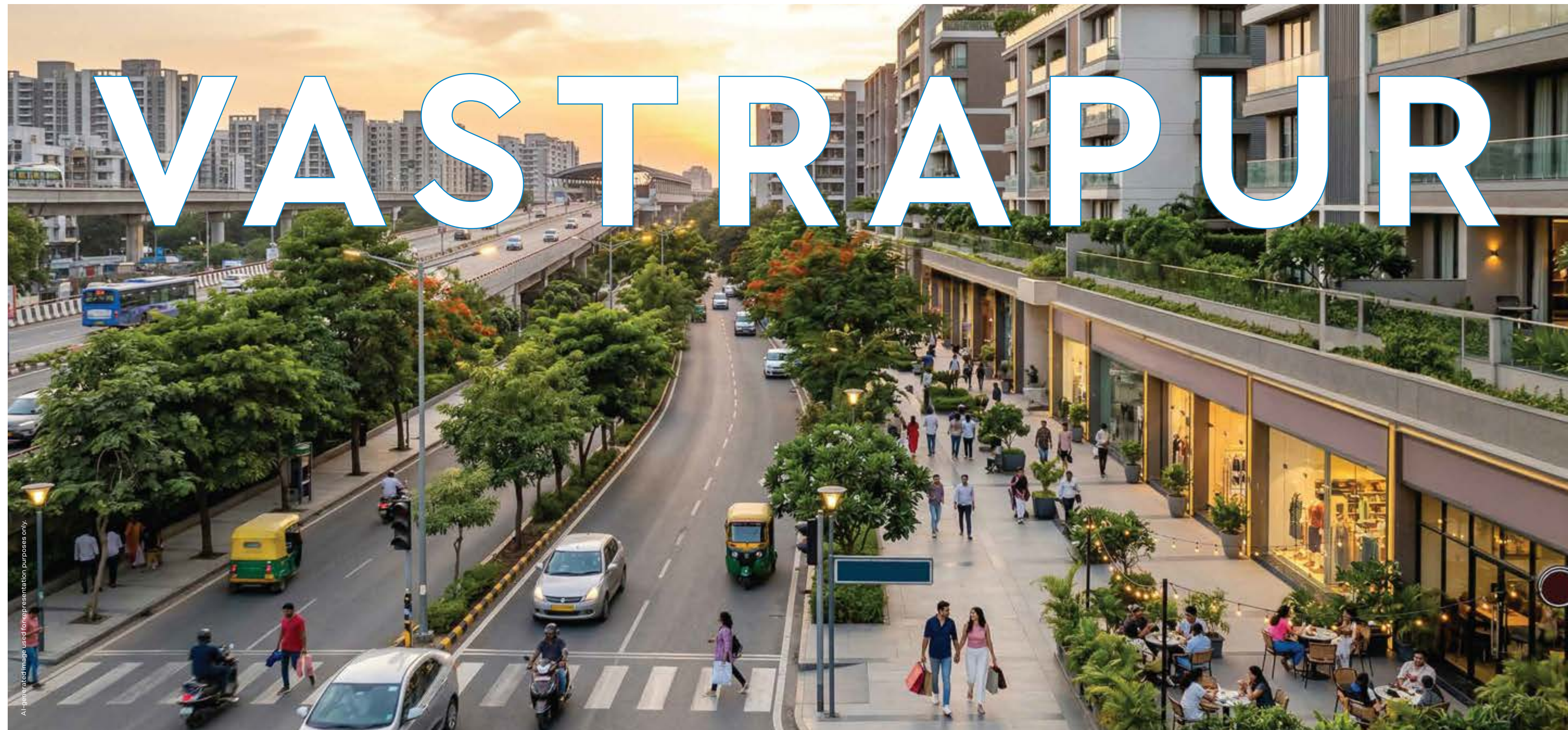
With the Godrej Group's legacy of innovation and excellence and 129 years of unwavering trust, we endeavour to deliver the finest quality developments, backed by a strong portfolio of residential and township projects across the country. Godrej Properties takes pride in being among India's most trusted developers, with a commitment to cutting-edge design and technology as we build strong foundations and stronger bonds.



**INDIA'S NO. 1\***  
**REAL ESTATE**  
**DEVELOPER**



\*Source: Brand Reports. As per booking value achieved in FY 2024 - 25 and FY 2025 - 26 for residential real estate



# VASTRAPUR

## WHERE THE CITY'S FINEST CONVERGE

Set within Ahmedabad's flourishing western corridor, Vastrapur embodies a rare confluence of seamless connectivity, refined lifestyle and effortless everyday convenience. Framed by well-established neighbourhoods, upscale retail boulevards and vibrant leisure destinations, it presents a distinctly elevated urban milieu.

With a robust residential catchment and a cultivated social fabric, Vastrapur reveals itself as one of the city's most coveted and distinguished addresses, where prestige, vibrancy and sophistication converge.

All new and old images used for representation purposes only.



## A PLACE THAT HOLDS THE CITY

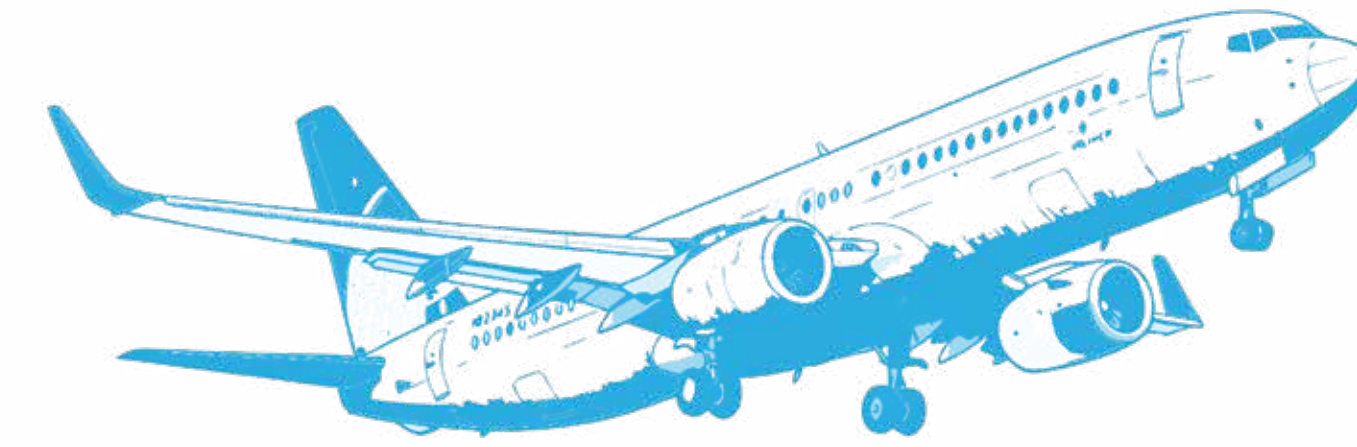
Positioned with precision for effortless city movement, Godrej Altus places every essential and indulgence within refined proximity. Premium retail, vibrant social avenues, cultural landmarks and spiritual destinations unfold in perfect alignment with your day.

Esteemed healthcare institutions, prominent transit corridors, the seamless metro network and the expanse of curated riverfront experiences converge to compose an address of rare fluidity, where every journey is as elevated as the destination itself.

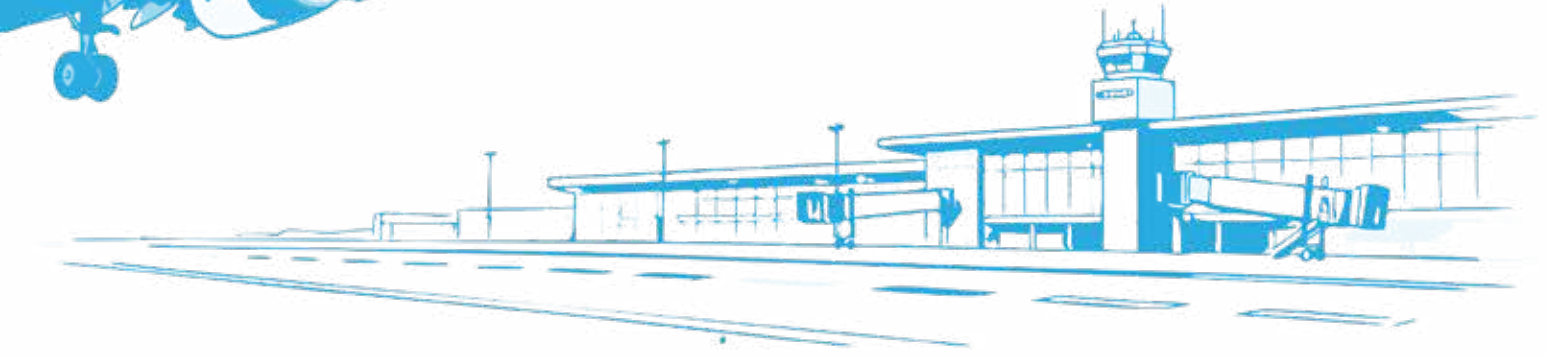
A setting where convenience, connection and a distinguished way of living come together with quiet confidence.

\*Source: Google Maps. The locations and landmarks shown are indicative and for reference only. They do not represent the exact scale, placement or geographic accuracy.

# ONE ADDRESS FOR SWIFT CONNECTIONS



Sardar Vallabhbhai Patel  
International Airport - 24 min\*

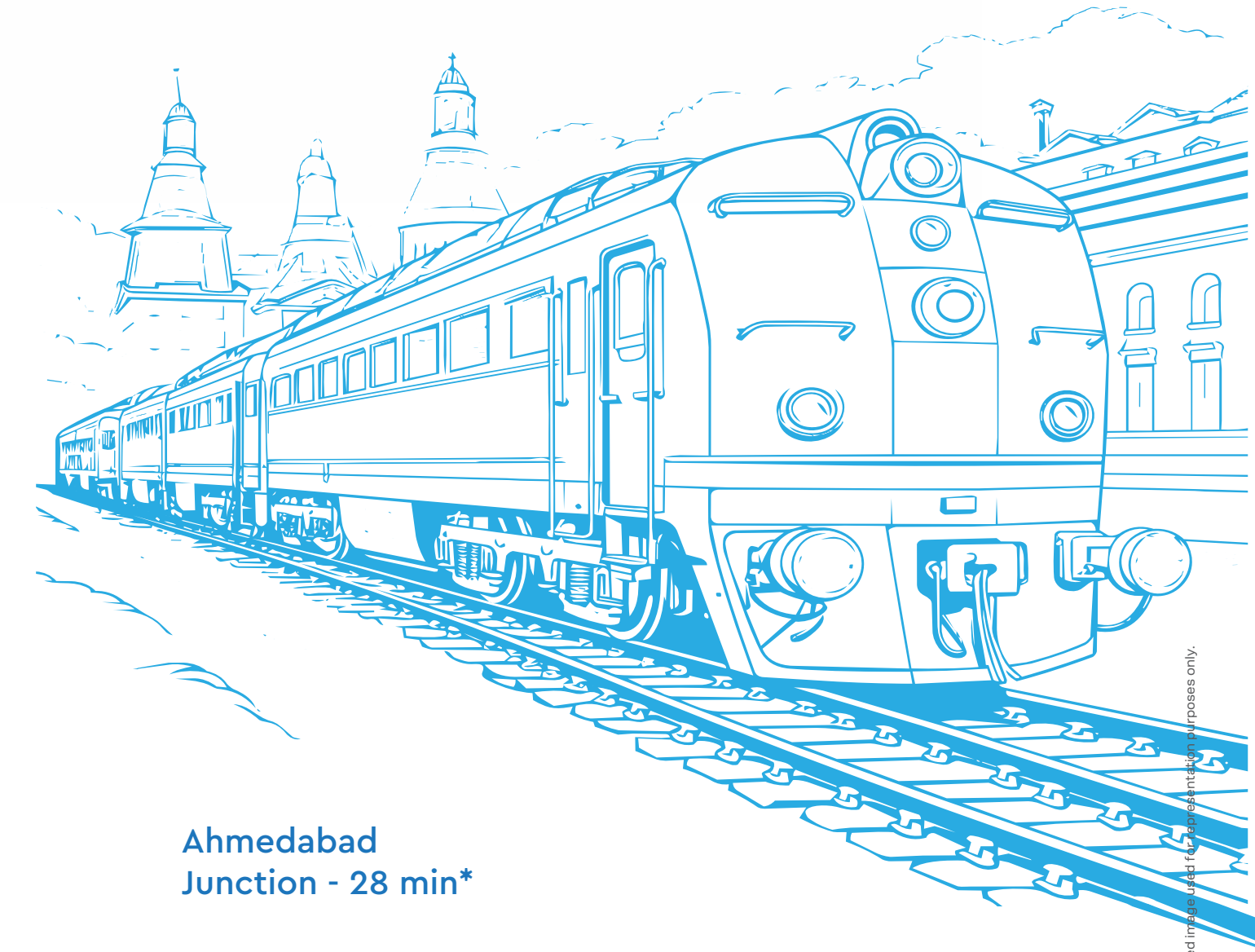
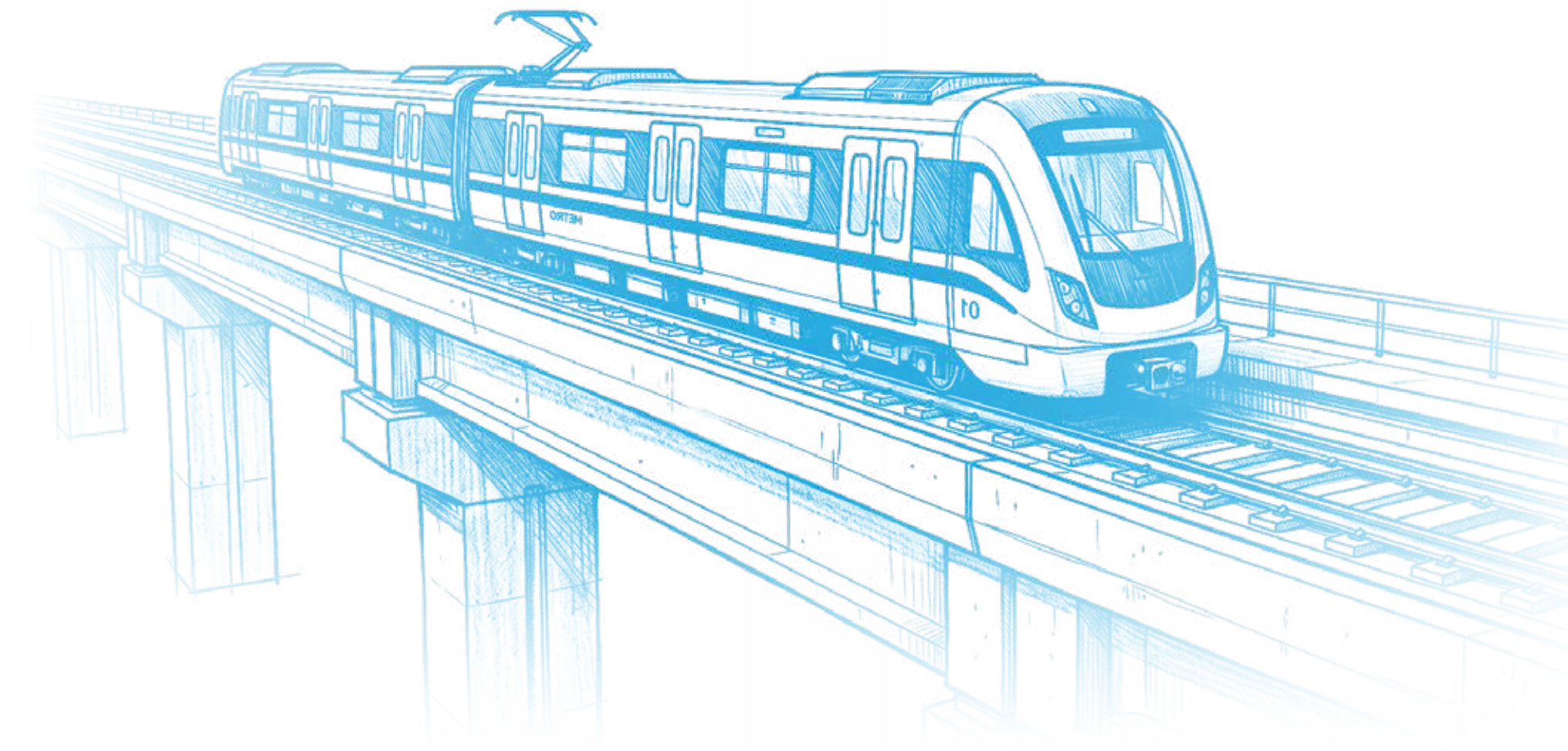


## SEAMLESS MOBILITY

An address defined by an expansive network of intercity rail lines and a future-ready multi-modal transit ecosystem crafted to global benchmarks. Metro corridors, grand arterial roads, rail connectivity and air links converge to create a seamless flow of movement across the city and beyond.

Here every route feels instinctive and every destination effortlessly within reach.

Gurukul Road  
Metro Station - 4 min\*



Ahmedabad  
Junction - 28 min\*

# THE CITY, PERFECTLY GATHERED AROUND YOU

## FINEST RETAIL AND LEISURE

At the intersection of Ahmedabad's most sought-after neighbourhoods, this address brings you within immediate reach of Thaltej (SG Highway), Satellite, Gurukul and Ambawadi. Each precinct offers its own distinct character, dynamic business hubs, established residential enclaves, refined retail avenues and vibrant social destinations.

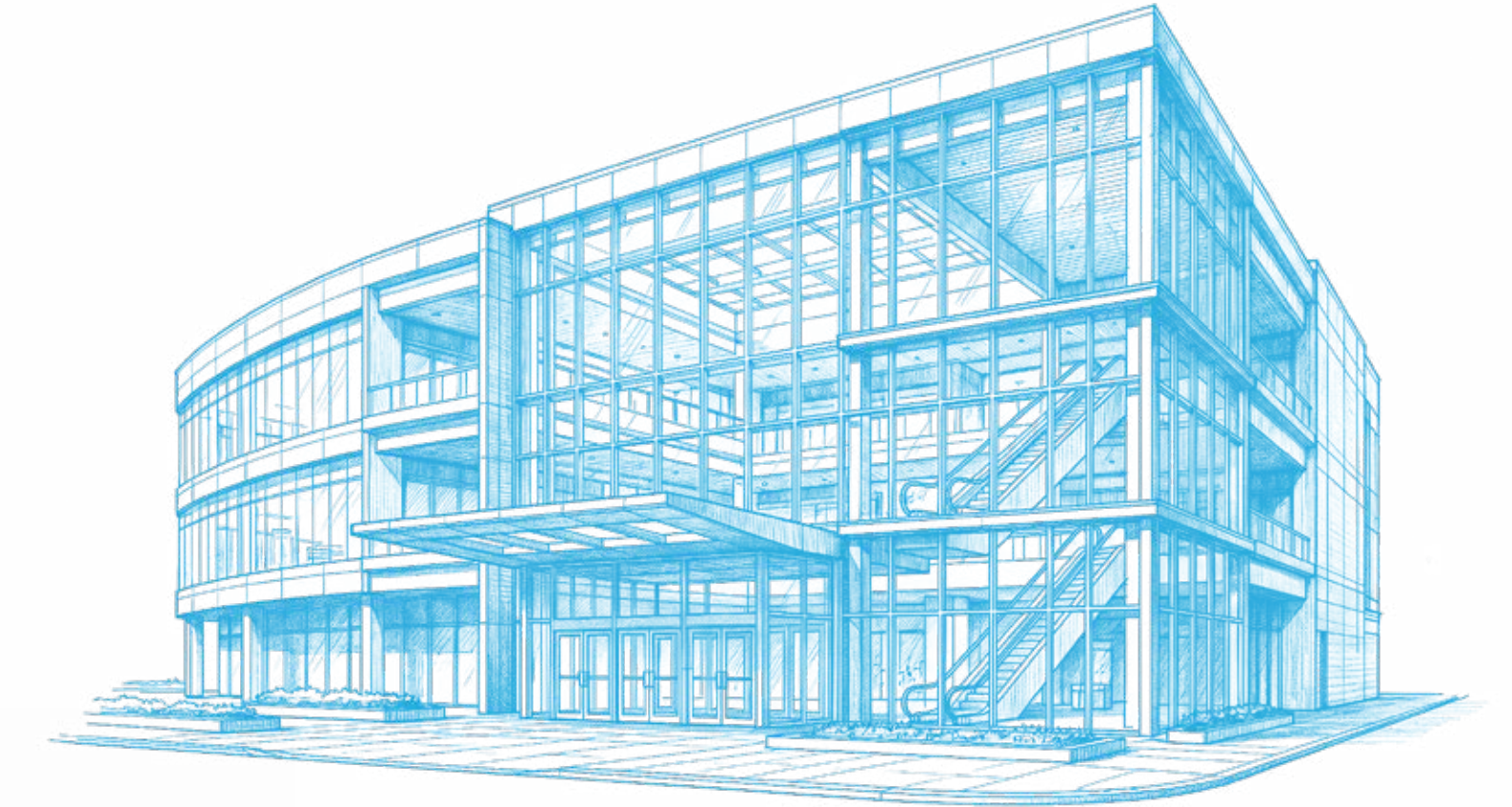
A location that brings the city's most relevant micro-markets closer, blending access, familiarity and everyday ease with quiet sophistication.

Palladium Mall - 8 min\*  
Acropolis Mall - 10 min\*

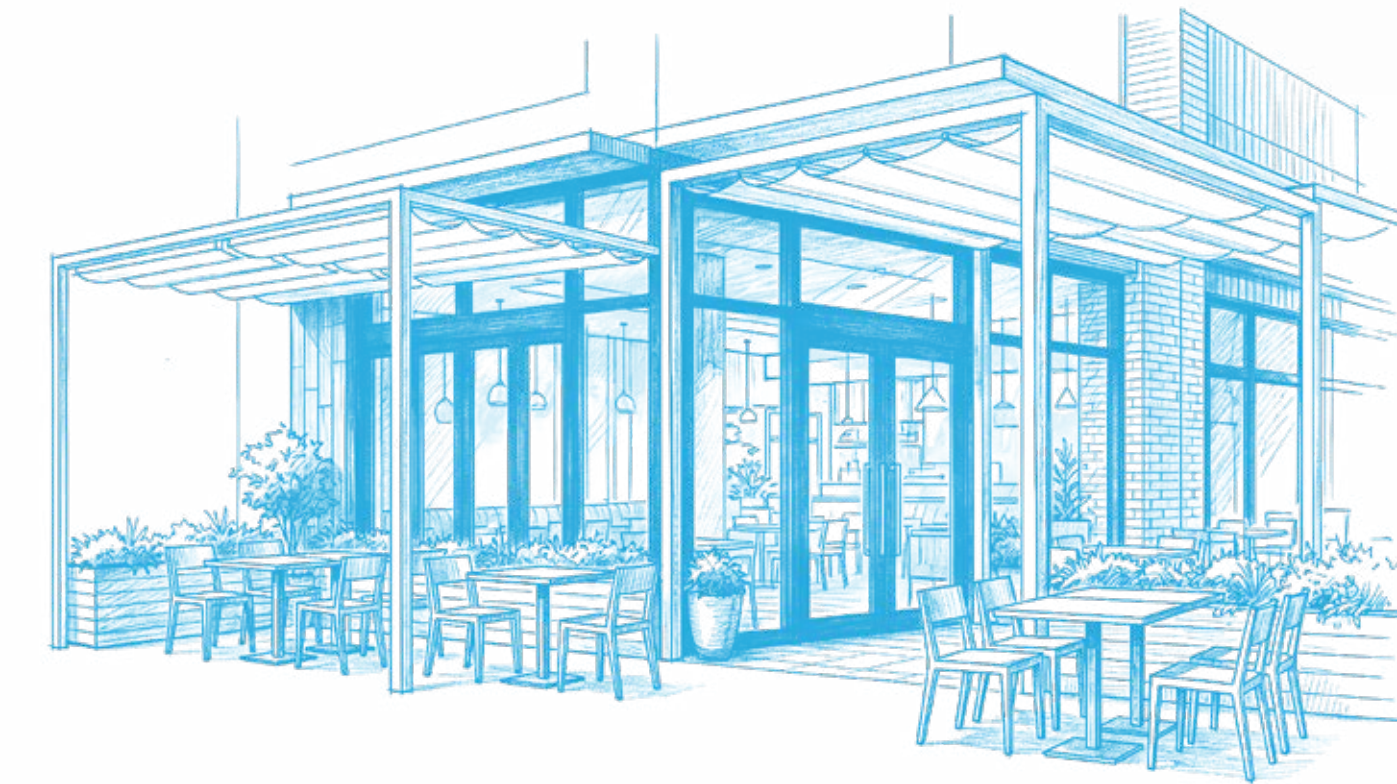
Karnavati Club - 15 min\*  
Rajpath Club - 16 min\*  
Savvy Swaraaj Sports Club - 18 min\*  
The Belvedere Golf & Country Club - 29 min\*

TG's The Oriental Grill-Hyatt - 3 min\*  
Peshwari - 7 min\*  
Lithosphere - 10 min\*  
Timpani - 11 min\*  
The Great Kabab Factory - 11 min\*  
Patang Re - Evolve - 13 min\*  
Lollo Rosso - 14 min\*

Nexus Ahmedabad One Mall - 3 min\*



TG's The Oriental Grill-Hyatt - 3 min\*



# A CONFLUENCE OF CULTURAL LEGACIES

## TIMELESS LANDMARKS

Set within an established and distinguished neighbourhood, Godrej Altus curates an elevated living experience where every essential meets refined indulgence. From premier educational institutions and world-class healthcare to upscale retail, fine dining and curated recreation, every facet of lifestyle is thoughtfully woven into its surroundings.

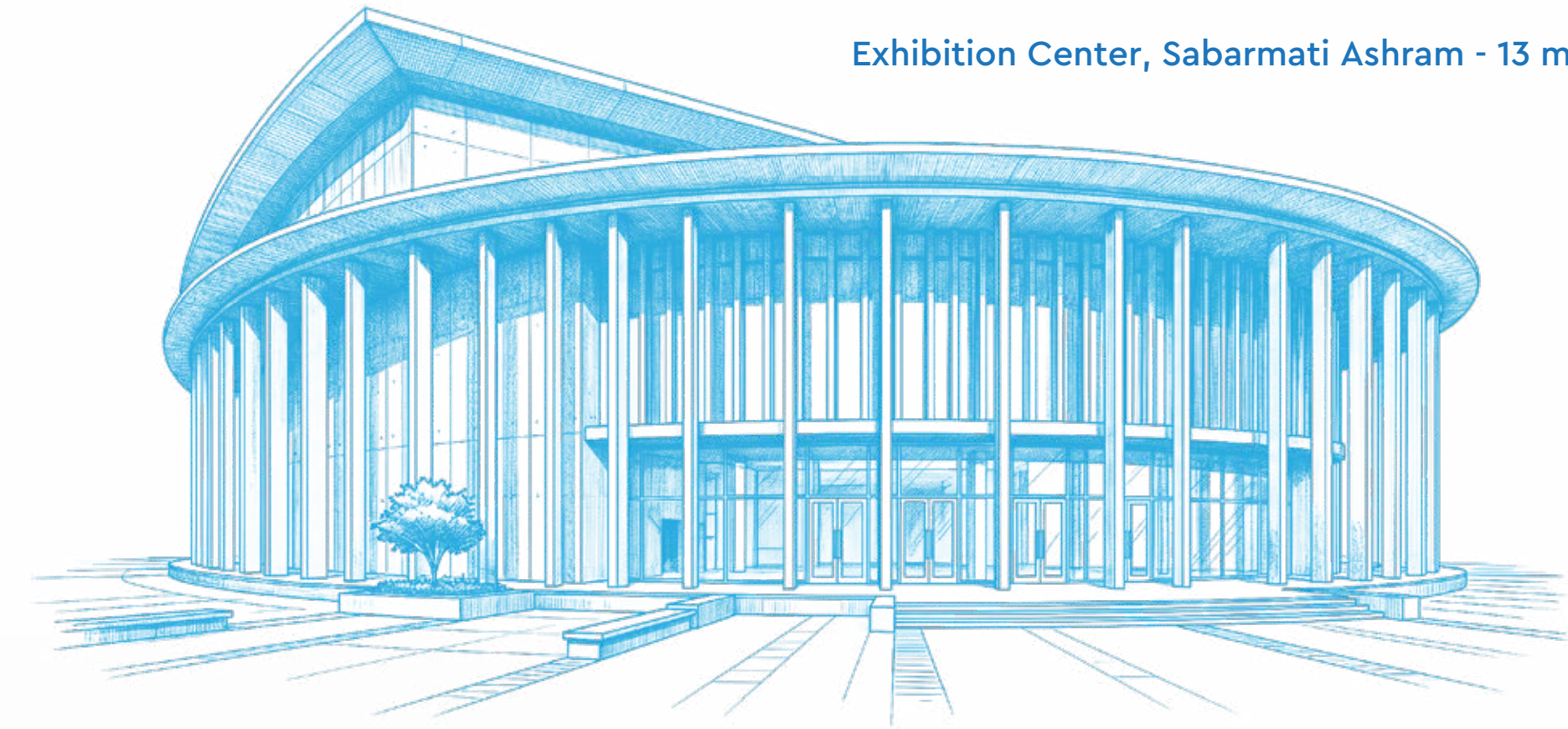
With seamless access to key transit corridors, connectivity becomes effortless, allowing every journey to flow with ease.

- Law Garden - 10 min\*
- Vikram Sarabhai Space - 11 min\*
- Science City Ahmedabad - 15 min\*
- ISKCON Temple - 15 min\*
- Nagina Wadi, Nr. Kankaria Lake - 24 min\*

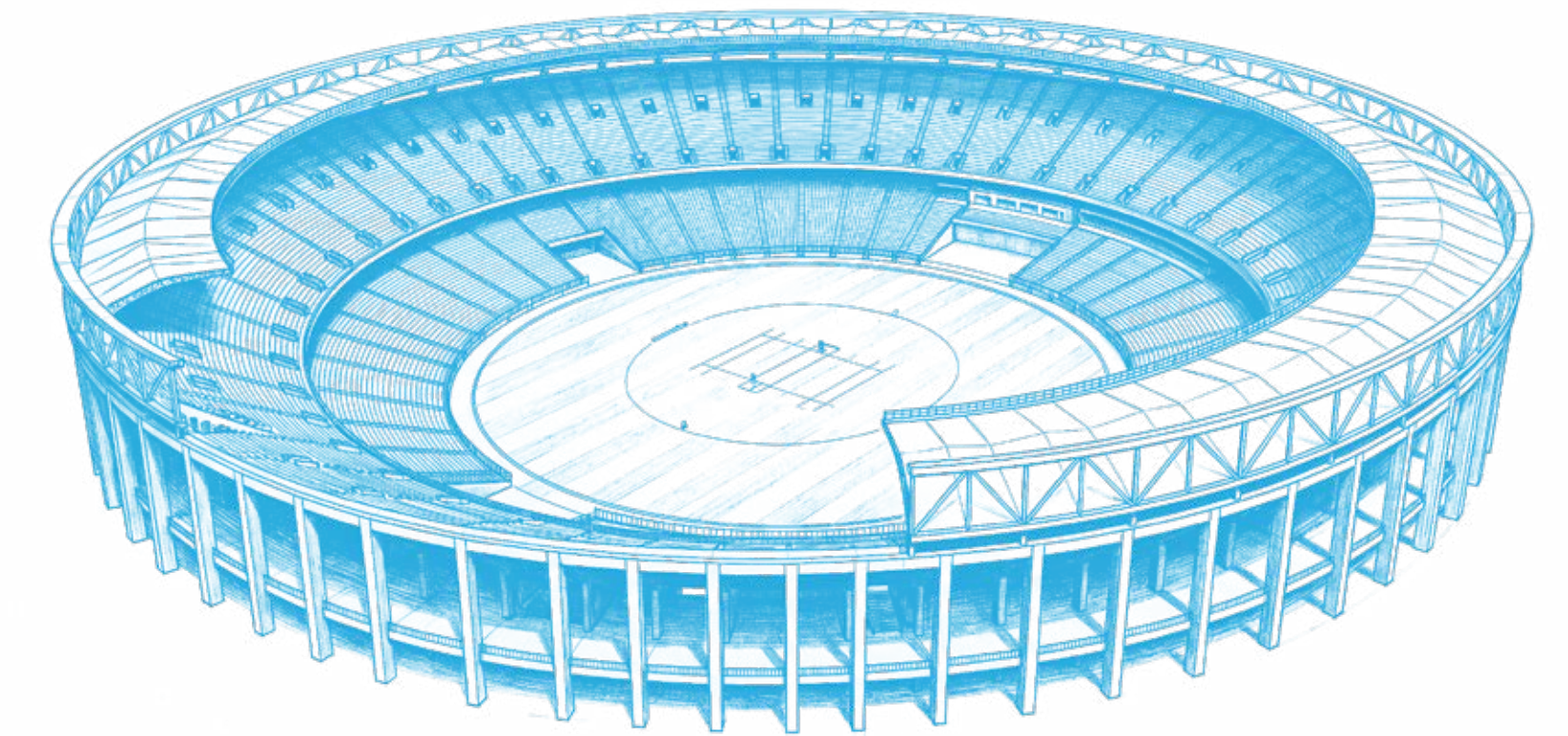
Nehru Bridge - 12 min\*



Exhibition Center, Sabarmati Ashram - 13 min\*



Narendra Modi Stadium - 22 min\*



# ENCIRCLED BY THE EXCLUSIVE

## RENOWNED INSTITUTIONS AND FINEST CARE WITHIN REACH

A setting enriched by vitality and diversity, where the city's most established social and lifestyle avenues come together in close proximity. Renowned schools and colleges, refined shopping destinations, vibrant entertainment and everyday social conveniences shape a neighbourhood that feels complete.

An address that brings together familiarity, access and a well-rounded way of living.

**Delhi Public School, Ahmedabad - 23 min\***

**Ahmedabad University - 6 min\***

**Gujarat University - 3 min\***

**L.D. College of Engineering - 6 min\***

**H.L. College of Commerce - 7 min\***

**St. Xavier's College - 7 min\***

**DHS Multispeciality Hospital - 5 min\***

**Sunflower Hospital - 5 min\***

**SAL Hospital & Medical Institute - 8 min\***

**Zydus Hospital - 11 min\***

**Marengo Asia CIMS Hospital - 12 min\***

Shri Narayan Central School - 12 min\*



IIM Ahmedabad - 6 min\*



Sterling Hospital - 4 min\*



## THE ARCHITECTURAL CONSULTANT'S SIGNATURE

Architecture has always been about creating spaces that feel timeless, thoughtful and deeply connected to the way people live.

With Godrej Altus, Vastrapur, the vision was to design a landmark that reflects Ahmedabad's rich architectural legacy while offering a more refined and contemporary expression of luxury.

Every aspect of the design, from the planning of the towers and expansive balconies to the flow of light, air and open spaces, has been carefully considered to create homes that feel elegant, open and enduring.

What makes this project truly special is its balance between context and aspiration, rooted in the spirit of the city, yet elevated in its design language.

It has been deeply rewarding to shape this vision with Godrej Properties.



**Hafeez Contractor**  
A LIA, G D Arch, M S Arch & U D (USA) Ph D (Hon) Arch, Ph D (Hon)  
Housing.

1st Floor, B-29 Sonawala Building, Nyaymurti G N Vaidya Road, Fort,  
Mumbai 400001.  
Tel: (+91 22) 2266 1920 E-mail: hafeez@hcontractor.com  
GST NO.: 27AADPC1634RR1ZL

**Architect  
Hafeez  
Contractor** | **40** Years  
ESTD. 1982





Art's impression used for representation purposes only.

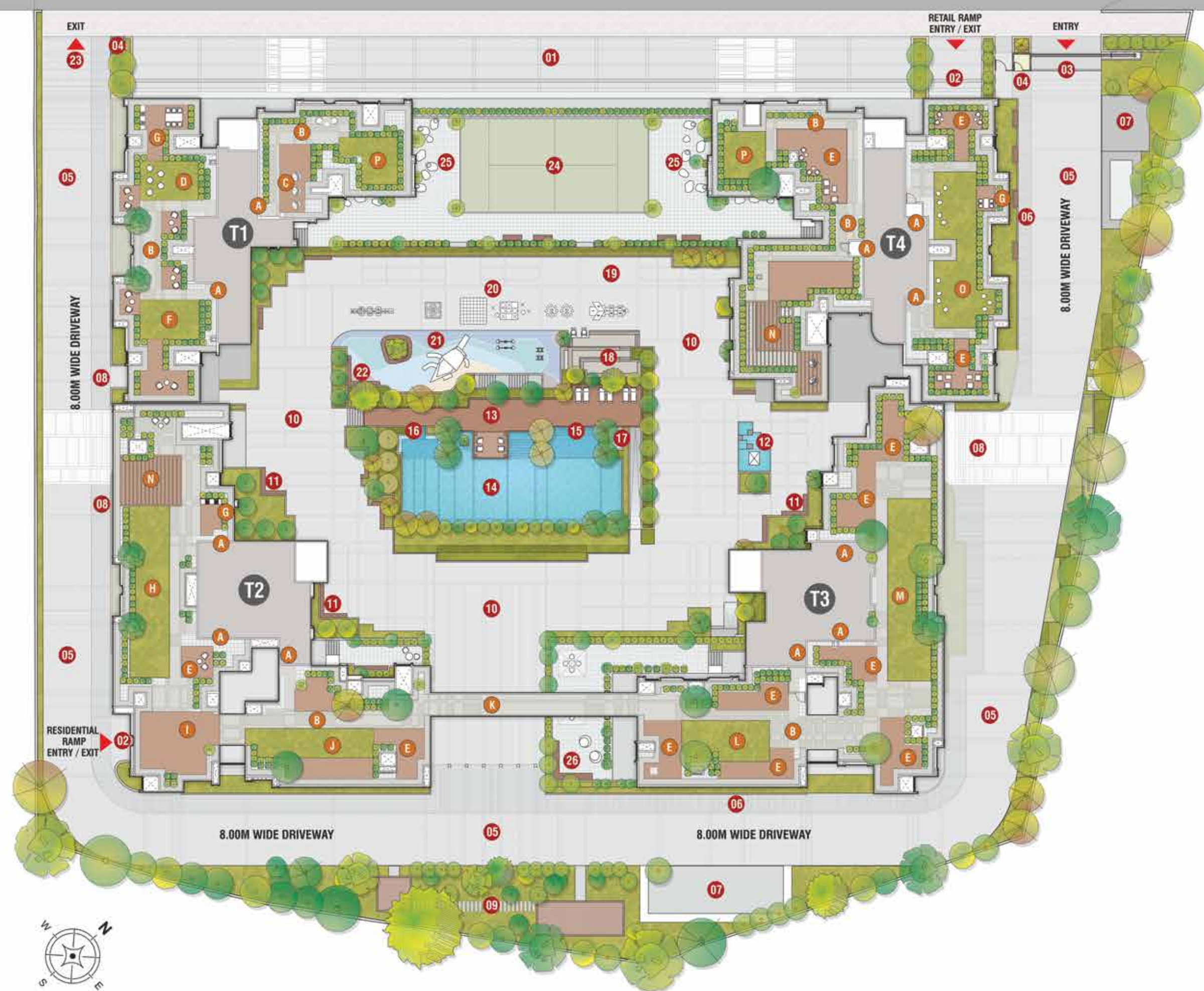
Note: The trees as shown are for representation purposes only. Actual size may vary.

PRESENTING



GODREJ ALTUS  
A CLASS ABOVE

18M WIDE ROAD



## A MASTERPLAN THAT DEFINES A CLASS ABOVE

### TERRACE LEGEND

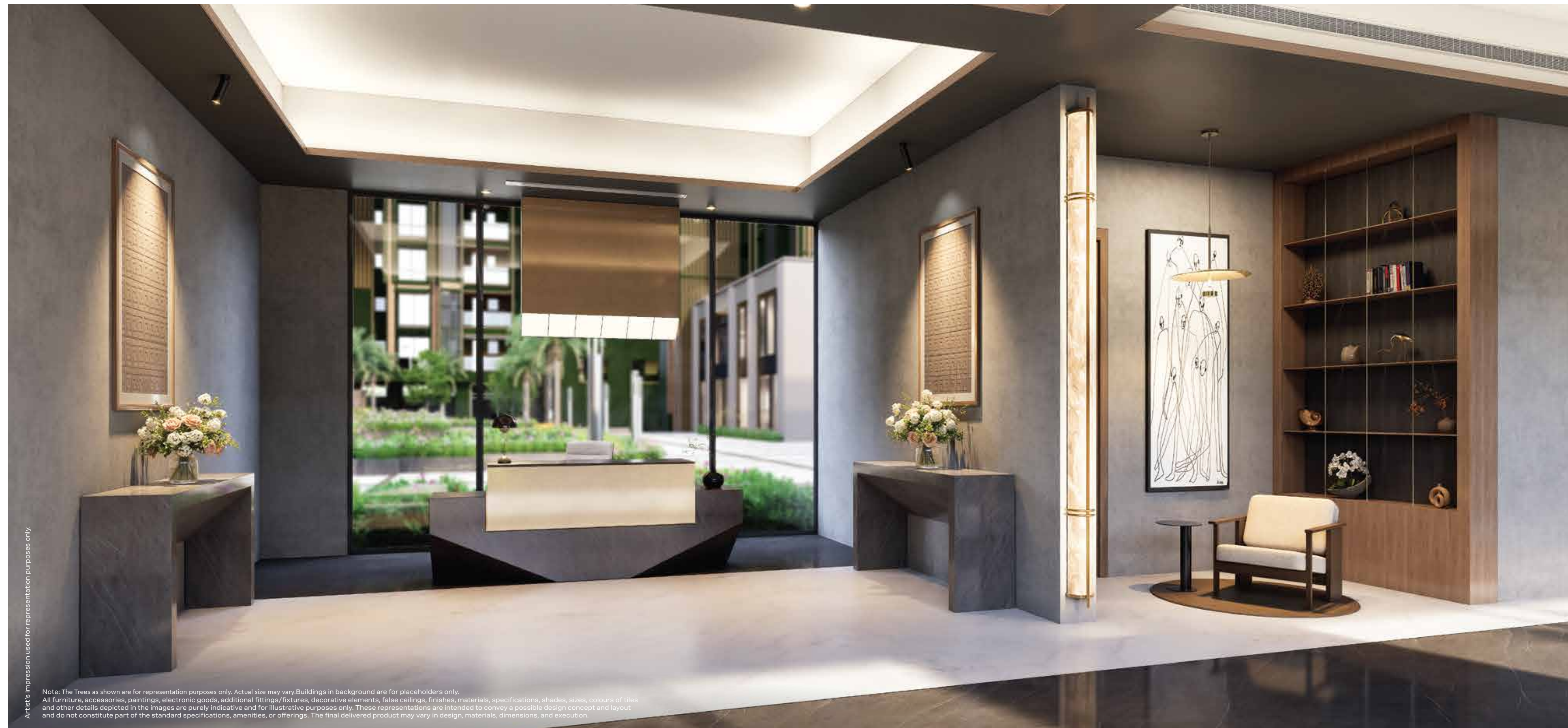
- A ENTRY LOBBY
- B WALKWAY
- C LOUNGE WITH SWING CHAIRS
- D SKYPLEX
- E SKY LOUNGE
- F ARTIFICIAL TURF
- G BBQ DECK
- H SKY CELEBRATION SPACE
- I STAR GAZING DECK
- J KITE FLYING PLAZA
- K SKY BRIDGE
- L SKY MEDITATION
- M WELLNESS ZONE
- N GAZEBO
- O PEBBLE PLAZA
- P STROLL PLAZA

### GROUND LEGEND

- 01 RETAIL PLAZA
- 02 RAMP TO BASEMENT PARKING
- 03 ENTRY
- 04 SECURITY CABIN
- 05 DRIVEWAY
- 06 WALKWAY
- 07 SERVICE YARD
- 08 DROP-OFF
- 09 LANDSCAPE GARDEN
- 10 PEDESTRIAN PLAZA
- 11 SEATING COVE
- 12 LOTUS POND WITH SCULPTURE
- 13 POOL DECK
- 14 LAP POOL
- 15 KIDS POOL
- 16 JACUZZI
- 17 OUTDOOR SHOWER
- 18 AMPHI SEATING
- 19 MOVIE SCREEN
- 20 FLOOR GAMES
- 21 KIDS PLAY AREA
- 22 PARENTS SIT-OUT
- 23 EXIT

### RETAIL & CLUB ROOFTOP

- 24 PADEL COURT
- 25 SIT-OUT
- 26 SEATING CORNER



## AN ARRIVAL THAT COMMANDS THE MOMENT

Spread across ~ 12,383 sq. mt. (~ 3.06 acres ) in the heart of Vastrapur, Godrej Altus stands as a landmark of thoughtful design and quiet distinction. Expansive greens, curated amenities and sweeping skyline views come together to create a living experience defined by refinement and timeless appeal.

From the moment you arrive, every detail reflects understated elegance, crafted to feel seamless, considered and complete.

Artist's impression used for representation purposes only.

Note: The Trees as shown are for representation purposes only. Actual size may vary. Buildings in background are for placeholders only. All furniture, accessories, paintings, electronic goods, additional fittings/fixtures, decorative elements, false ceilings, finishes, materials, specifications, shades, sizes, colours of tiles and other details depicted in the images are purely indicative and for illustrative purposes only. These representations are intended to convey a possible design concept and layout and do not constitute part of the standard specifications, amenities, or offerings. The final delivered product may vary in design, materials, dimensions, and execution.

Set across an expansive ~1,858 sq. mt. (~20,000 sq. ft.) of curated terrace, this rarefied realm reveals a collection of 10+ thoughtfully envisioned amenities, where sky and horizon merge seamlessly.

Here, each space is composed in dialogue with the skyline, framing moments that feel both personal and infinite: a measured walk along the sky bridge, a moment of stillness on the meditation deck, or an evening beneath a quiet canopy of stars.

## WHERE SKY IS THE BEGINNING

# THE SKY, RESERVED FOR YOU

Above Ahmedabad, the Sky Hub at Godrej Altus opens to sweeping skyline views. As night falls, it transforms into a serene, starlit expanse, where the city softens into a distant glow.

A place to pause, gaze upward and savour quiet moments beneath open skies, where calm, perspective and a sense of arrival come effortlessly.



Note: The Trees as shown are for representation purposes only. Actual size may vary. Buildings in background are for placeholders only. All furniture, accessories, paintings, electronic goods, additional fittings/fixtures, decorative elements, false ceilings, finishes, materials, specifications, shades, sizes, colours of tiles and other details depicted in the images are purely indicative and for illustrative purposes only. These representations are intended to convey a possible design concept and layout and do not constitute part of the standard specifications, amenities or offerings. The final delivered product may vary in design, materials, dimensions and execution.

Artist's impression used for representation purposes only.



## A REALM ABOVE, THE EVERYDAY

A rooftop where living assumes a more exalted perspective, expansive in outlook and defined by quiet distinction. Here, leisure, wellness and social pursuits come together in effortless harmony, each space thoughtfully composed for moments of repose, renewal and connection.

Guided by an elegant interplay of openness and design, the experience unfolds as a seamless progression where one setting flows gracefully into the next. More than a vantage, it is a realm where living is expressed with poise and every moment carries a quiet sense of grandeur.

Artist's impression used for representation purposes only.

Note: The Trees as shown are for representation purposes only. Actual size may vary. Buildings in background are for placeholders only. All furniture, accessories, paintings, electronic goods, additional fittings/fixtures, decorative elements, false ceilings, finishes, materials, specifications, shades, size, colors of tiles and other details depicted in the images are purely indicative and for illustrative purposes only. These representations are intended to convey a possible design concept and layout and do not constitute part of the standard specifications, amenities or offerings. The final delivered product may vary in design, materials, dimensions and execution.



## THE ART OF CALM, ELEVATED

Held in rarefied stillness, this meditation deck rests beneath the open sky. Movement softens into intention, each breath measured, each posture unfolding against an infinite horizon.

The expanse above lends a quiet sense of weightlessness, where mind and body fall into effortless alignment.

Conceived as a serene sanctuary, the space invites a deeper inward pause, where silence feels richer, the world gently recedes and a lasting calm settles beneath the boundless firmament.

Artist's impression used for representation purposes only.

Note: The Trees as shown are for representation purposes only. Actual size may vary. Buildings in background are for placeholders only. All furniture, accessories, paintings, electronic goods, additional fittings, fixtures, decorative elements, false ceilings, finishes, materials, specifications, shades, sizes, colours of tiles and other details depicted in the images are purely indicative and for illustrative purposes only. These representations are intended to convey a possible design concept and layout and do not constitute part of the standard specifications, amenities or offerings. The final delivered product may vary in design, materials, dimensions and execution.

## WHERE SPACE, SERENITY AND SOPHISTICATION CONVERGE

Spanning ~929.03 sq. mt. (~10,000 sq. ft.), the courtyard is conceived as an open-air realm of quiet luxury, where tranquil pool, serene greenery and leisure are orchestrated with refined precision.

From the serene elegance of swimming pools to the sculpted presence of an amphitheatre and thoughtfully designed play areas, every element reflects measured sophistication. Light, air and space flow with effortless grace through the day.

More than a courtyard, it is a setting of rare poise, where outdoor living finds its most elevated expression.



NOTE: The trees as shown are for representational purposes only. Actual size may vary. Buildings in background are for placeholders only. All furniture, accessories, paintings, electronic goods, additional fittings/fixtures, decorative elements, false ceilings, finishes, materials, specifications, shades, sizes, colours of tiles and other details depicted in the images are purely indicative and for illustrative purposes only. These representations are intended to convey a possible design concept and layout and do not constitute part of the standard specifications, amenities or offerings. The final delivered product may vary in design, materials, dimensions and execution.

Artist's impression. Not for representation purposes only.

## THE ART OF PLAY, PERFECTED

Within a setting attuned to refined recreation, this indoor enclave brings together thoughtfully designed spaces for dynamic movement, focused exchanges and moments of poised interaction, each unfolding with effortless grace.





## A STAGE FOR SPIRITED MOMENTS

Where play transcends age and becomes a shared experience. Spaces unfold effortlessly, from spontaneous moments of activity to quick bursts of energy, while children gravitate toward their own corners of discovery. Around the recreation zones, a gentle shared energy gathers, bringing together movement, laughter and moments of connection.

Artist's impression used for representation purposes only.

Note: The Trees as shown are for representation purposes only. Actual size may vary. Buildings in background are for placeholders only.

## A WORLD OF LEISURE, PRIVATELY HELD

Extending across an impressive ~1858 sq. mt. (~20,000 sq. ft.), the clubhouse is envisioned as a distinguished enclave of refined living, where over ten thoughtfully designed amenities come together with quiet precision. Spaces unfold with measured grandeur, the hushed elegance of a reading cove or library, the composed refinement of workspaces and the stately presence of a multipurpose hall for occasions of consequence.

Mornings begin with the serene discipline of yoga or the restorative calm of the spa, while the gymnasium and shared spaces bring energy to the day. As evening descends, the atmosphere settles into quiet splendour, where conversation and camaraderie take centre stage.

More than a clubhouse, it is a setting of rare distinction, where leisure and engagement align in a life shaped by enduring grace.



Note: The Trees as shown are for representation purposes only. Actual size may vary. Buildings in background are for placeholders only. All furniture, accessories, paintings, electronic goods, additional fittings/fixtures, decorative elements, false ceilings, finishes, materials, specifications, shades, sizes, colours of tiles and other details depicted in the images are purely indicative and for illustrative purposes only. These representations are intended to convey a possible design concept and layout and do not constitute part of the standard specifications, amenities or offerings. The final delivered product may vary in design, materials, dimensions and execution.

Artist's impression used for representation purposes only.



# THE PURSUIT OF POWER, REFINED

Strength finds its rhythm in a space defined by clarity and control. Here, movement flows with purpose, uninterrupted, focused and instinctive.

Every element is shaped for those who value discipline as a way of life, where energy, balance and precision come together in an environment that feels composed, immersive and distinctly elevated.

Artist's impression used for representation purposes only.  
Note: The Trees as shown are for representation purposes only. Actual size may vary. Buildings in background are for placeholders only.  
All furniture, accessories, paintings, electronic goods, additional fittings, fixtures, decorative elements, false ceilings, finishes, materials, specifications, shades, sizes, colours of tiles and other details depicted in the images are purely indicative and for illustrative purposes only. These representations are intended to convey a possible design concept and layout and do not constitute part of the standard specifications, amenities or offerings. The final delivered product may vary in design, materials, dimensions and execution.

## A HAVEN OF CALM AND RENEWAL

A sanctuary of quiet indulgence, where wellness is approached with depth and quiet refinement. From mindful movement to immersive, restorative therapies, each space is thoughtfully composed to soothe, restore balance and gently centre the senses. An experience that lingers softly and gracefully, long after one returns to the rhythm of the day.

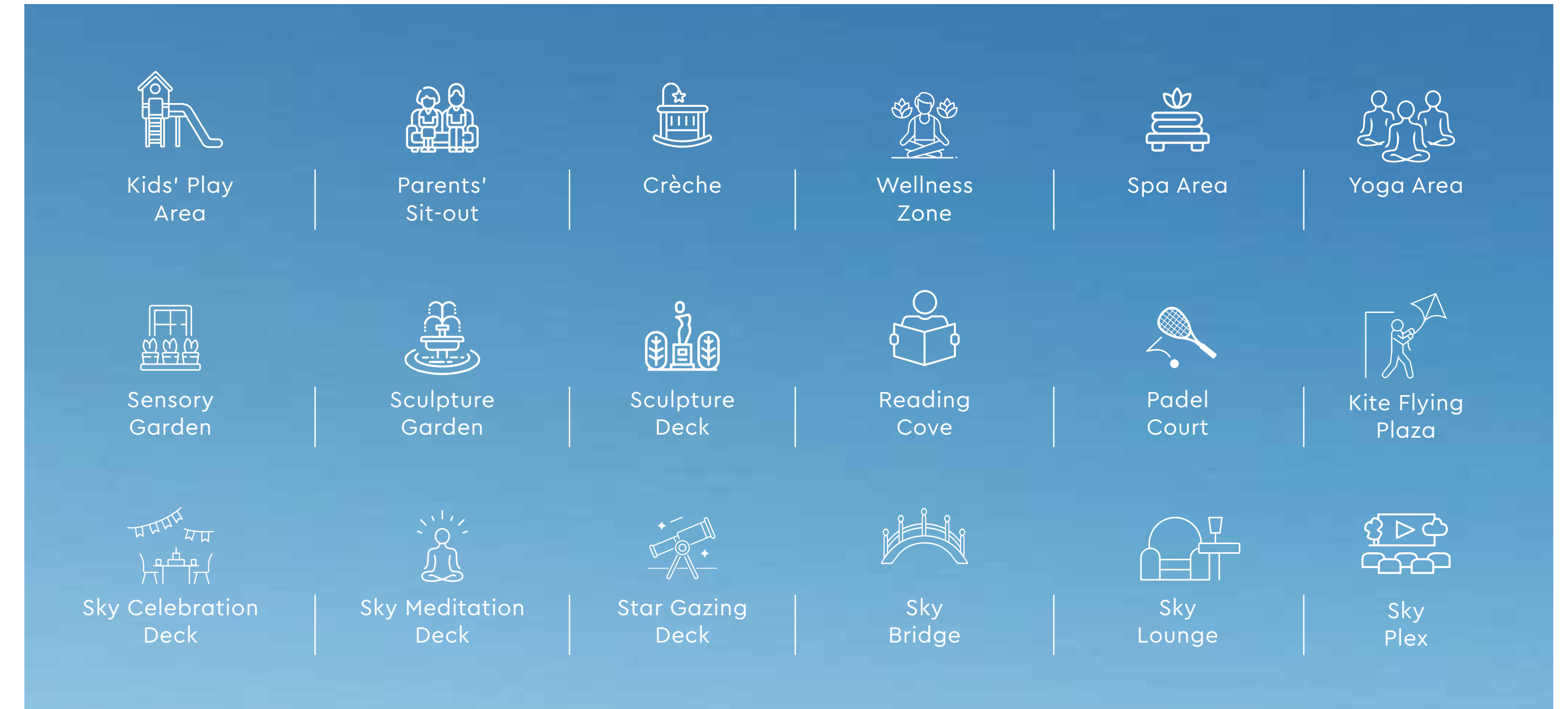
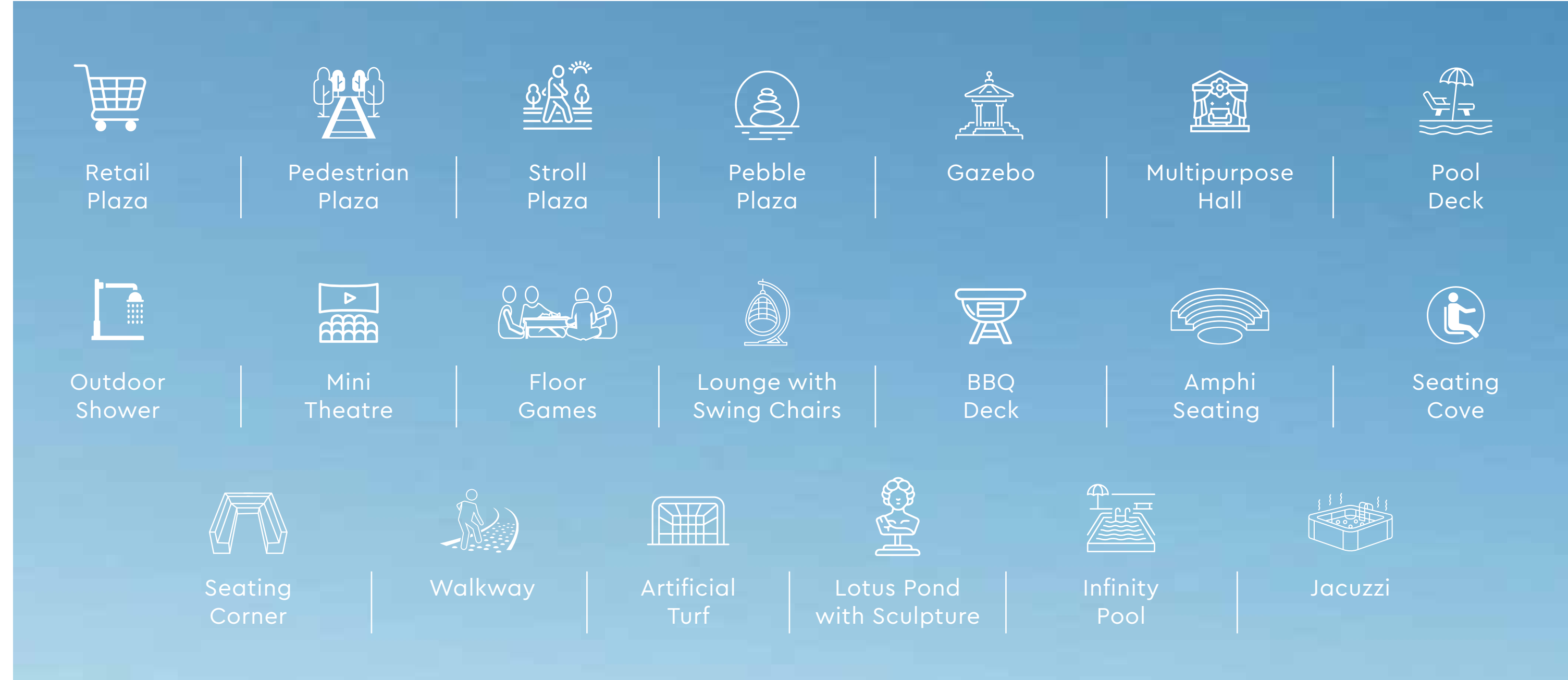


Note: The Trees as shown are for representation purposes only. Actual size may vary. Buildings in background are for placeholders only. All furniture, accessories, paintings, electronic goods, additional fittings/fixtures, decorative elements, false ceilings, finishes, materials, specifications, shades, sizes, colours of tiles and other details depicted in the images are purely indicative and for illustrative purposes only. These representations are intended to convey a possible design concept and layout and do not constitute part of the standard specifications, amenities or offerings. The final delivered product may vary in design, materials, dimensions and execution.

Artist's impression used for representation purposes only.

## A CURATED COLLECTION OF EXPERIENCES

Each space unfolds in quiet harmony with the rhythm of the day, as if listening to its subtle poetry. Mornings begin with a soft energy along the sky jogging track, while open grounds come alive with play, from drifting kites to steady rallies. Pauses find meaning beside the lotus pond, within the reading cove, or on the meditation deck. Here, pavilions and courts seamlessly blend motion and stillness, creating a balance that feels both natural and serene.



As twilight descends, the setting takes on a luminous, almost ethereal character. Gatherings settle gracefully across open lawns and along the steps of the amphitheatre, while elevated lounges and skyward bridges frame the city in a soft, distant glow. Beneath a canopy of stars, conversations, quiet reflection and gentle celebration unfold, each moment shaped by an atmosphere that feels rare, composed and timelessly regal.



## A SPACE THAT FEELS INHERENTLY YOURS

Moments gather here, effortlessly. Conversations stretch, laughter lingers and time feels well spent.

A setting that understands togetherness, shaped for comfort, connection and everything in between.

Artist's impression used for representation purposes only.  
Note: The Trees as shown are for representation purposes only. Actual size may vary. Buildings in background are for placeholder only.  
All furniture, accessories, paintings, electronic goods, additional fittings/fixtures, decorative elements, false ceilings, finishes, materials, specifications, shades, sizes, colours of tiles and other details depicted in the images are purely indicative and for illustrative purposes only. These representations are intended to convey a possible design concept and layout and do not constitute part of the standard specifications, amenities or offerings. The final delivered product may vary in design, materials, dimensions and execution.



**Astrologer Chirag Daruwalla**  
Shri Chirag Daruwalla, renowned Vaastu expert, carries forward the legacy of Shri Bejan Daruwalla.

With 18+ years of experience, he serves a global clientele and is a recipient of the International Jyotish Ratan Award and Global Best Astrologer Award.

## THE VAASTU CONSULTANT'S SIGNATURE

This is to certify that the planning and design of Godrej Altus have been conceived and executed in alignment with the principles of Vastu Shastra, ensuring a harmonious integration of spatial orientation, form and function.

### Property Details:

GODREJ ALTUS  
(Godrej Properties Ltd.)  
Plot No. 99, Besides GMDC, Vastrapur, Ahmedabad  
RERA Registration No. MAA16636/240326/071131

It is further affirmed that every residential unit within Godrej Altus is Vastu compliant, with each home thoughtfully designed in accordance with these time honoured principles. Vastu compliance has been intrinsically embedded into the architectural planning, reinforcing a sense of balance, well-being and considered living across the development.

### Declaration:

I, Chirag Daruwalla, acting as the Vastu Consultant, hereby declare that the aforementioned property is Vastu Compliant as of the date of inspection. All recommended corrections have been successfully implemented to harmonize the living/working space.

GANESHA'S GRACE  
A-2007, Privilon, ISKCON Ambli Road, S G Highway,  
Ahmedabad, Gujarat 380054  
GSTIN: 24GBPPK7409M1Z0  
HSN/SAC 998399

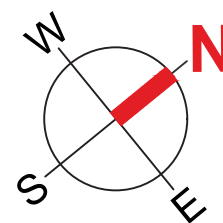
## UNIT CONFIGURATION

TYOLOGY	CARPET AREA (SQ . MT.)	CARPET AREA (SQ . FT.)
3 BHK PREMIUM	142.93 - 144.73	1538 - 1558
4 BHK PREMIUM	188.11 - 193.73	2025 - 2085
4 BHK LUXURY	216.87 - 228.29	2334 - 2457

# UNIT TYPE: 3 BHK PREMIUM



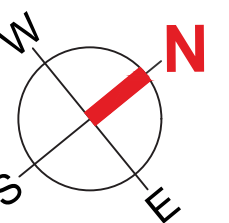
AREA AS PER RERA				
UNIT TYPE	RERA CARPET AREA (SQ . MT.)	EXCLUSIVE AREA (SQ . MT.)	TOTAL AREA (SQ . MT.)	TOTAL AREA (SQ . FT.)
3 BHK PREMIUM	127.09	15.84	142.93	1538



# UNIT TYPE: 3 BHK PREMIUM



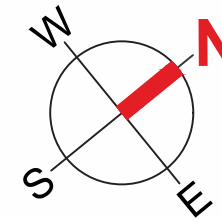
AREA AS PER RERA				
UNIT TYPE	RERA CARPET AREA (SQ . MT.)	EXCLUSIVE AREA (SQ . MT.)	TOTAL AREA (SQ . MT.)	TOTAL AREA (SQ . FT.)
3 BHK PREMIUM	127.69	16.18	143.87	1549



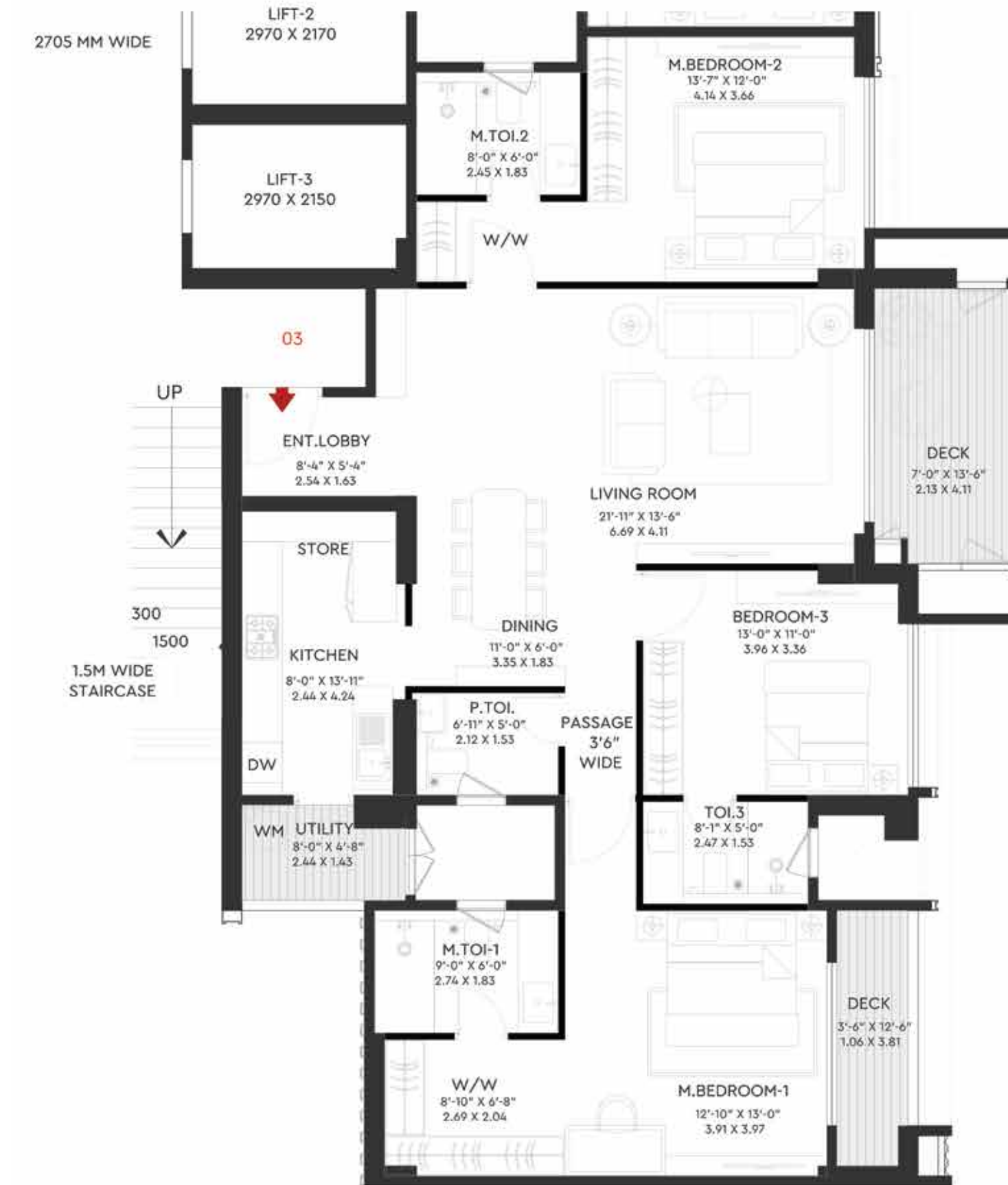
# UNIT TYPE: 3 BHK PREMIUM



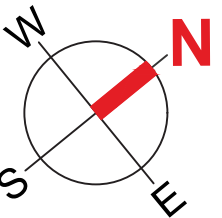
AREA AS PER RERA				
UNIT TYPE	RERA CARPET AREA (SQ . MT.)	EXCLUSIVE AREA (SQ . MT.)	TOTAL AREA (SQ . MT.)	TOTAL AREA (SQ . FT.)
3 BHK PREMIUM	128.05	15.95	144.00	1550



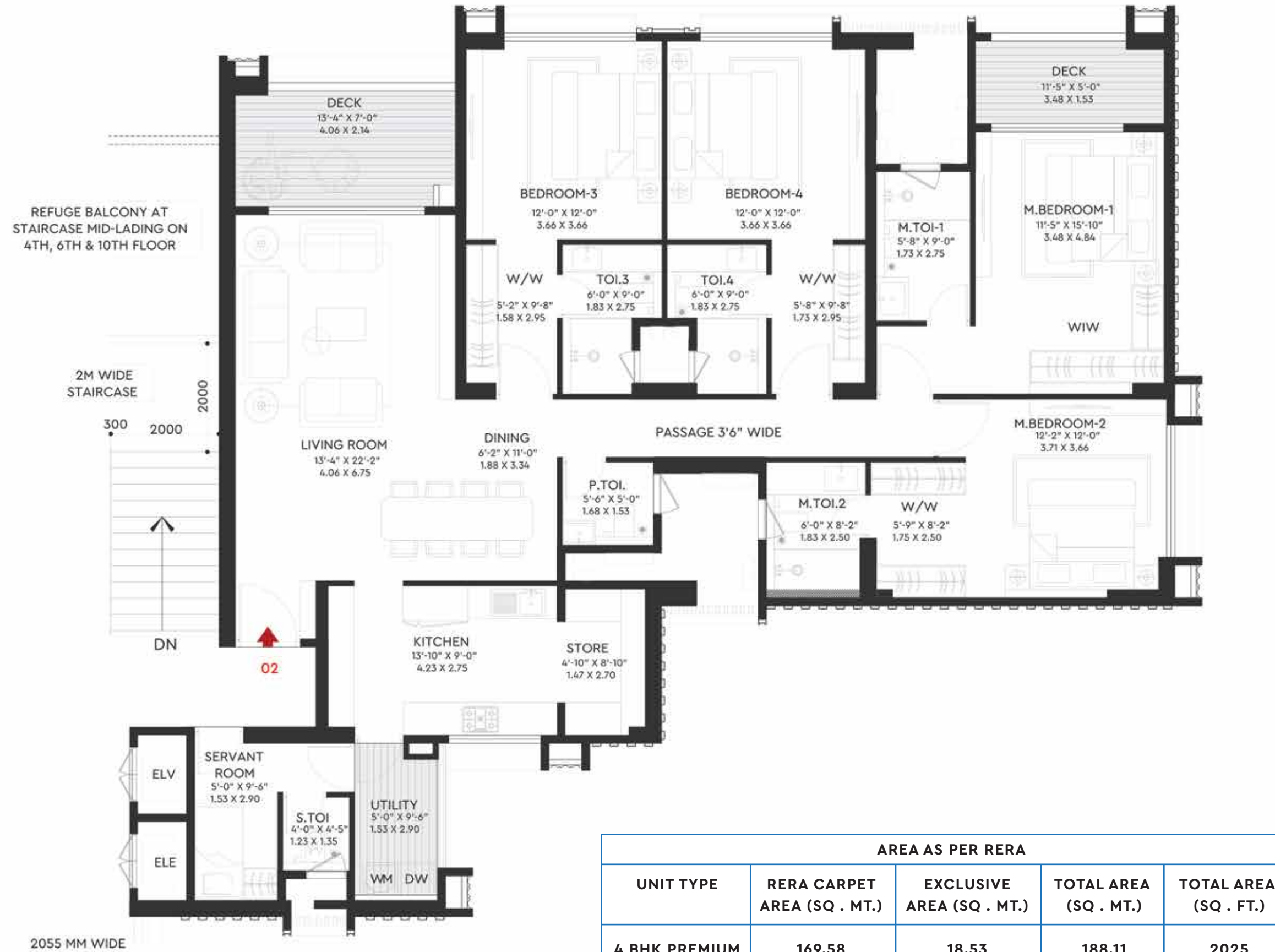
# UNIT TYPE: 3 BHK PREMIUM



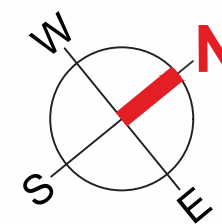
AREA AS PER RERA				
UNIT TYPE	RERA CARPET AREA (SQ . MT.)	EXCLUSIVE AREA (SQ . MT.)	TOTAL AREA (SQ . MT.)	TOTAL AREA (SQ . FT.)
3 BHK PREMIUM	128.35	16.38	144.73	1558



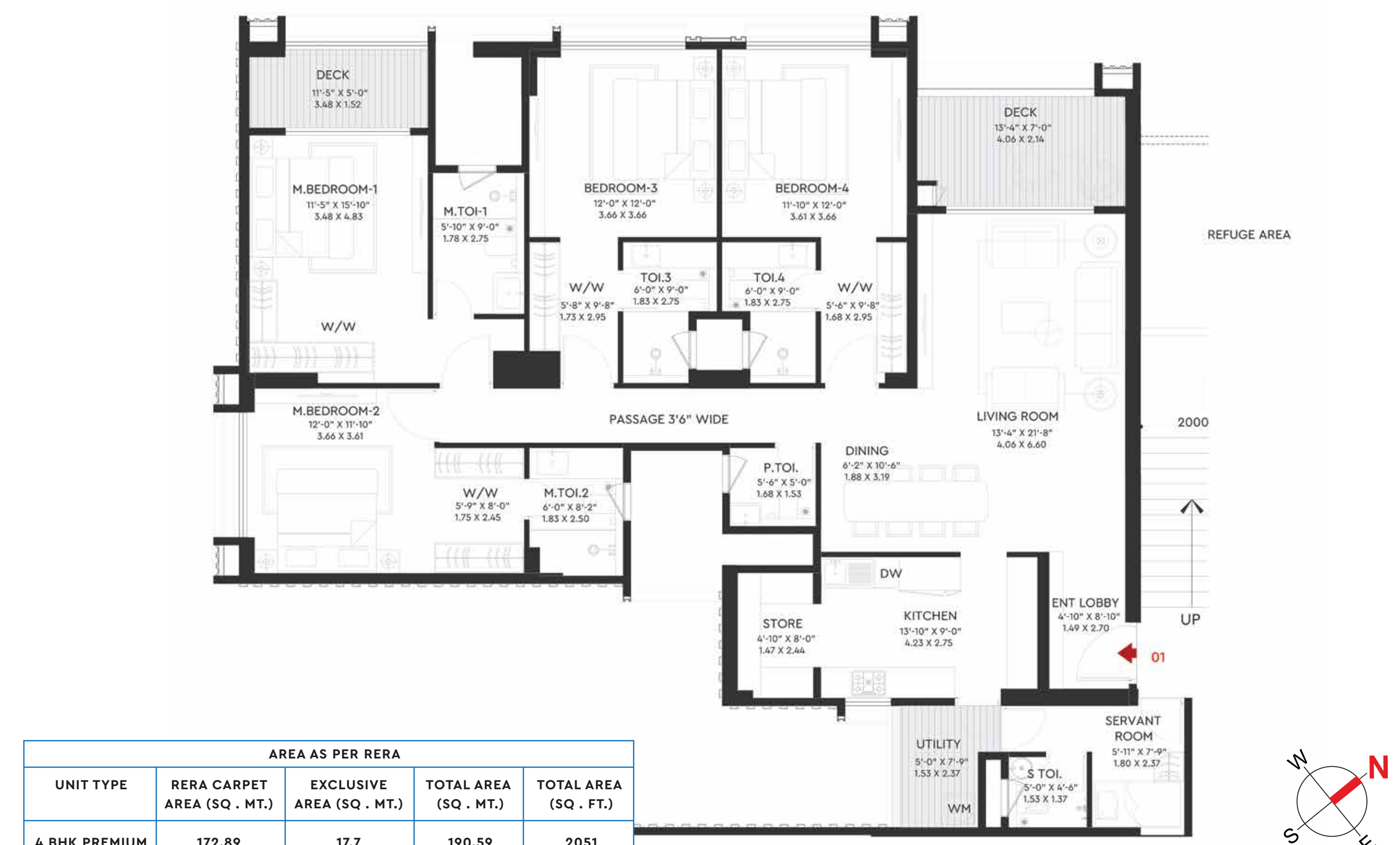
# UNIT TYPE: 4 BHK PREMIUM



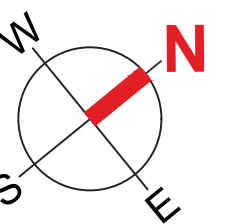
AREA AS PER RERA				
UNIT TYPE	RERA CARPET AREA (SQ . MT.)	EXCLUSIVE AREA (SQ . MT.)	TOTAL AREA (SQ . MT.)	TOTAL AREA (SQ . FT.)
4 BHK PREMIUM	169.58	18.53	188.11	2025



# UNIT TYPE: 4 BHK PREMIUM



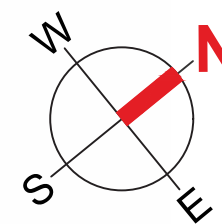
AREA AS PER RERA				
UNIT TYPE	RERA CARPET AREA (SQ . MT.)	EXCLUSIVE AREA (SQ . MT.)	TOTAL AREA (SQ . MT.)	TOTAL AREA (SQ . FT.)
4 BHK PREMIUM	172.89	17.7	190.59	2051



# UNIT TYPE: 4 BHK PREMIUM



AREA AS PER RERA				
UNIT TYPE	RERA CARPET AREA (SQ . MT.)	EXCLUSIVE AREA (SQ . MT.)	TOTAL AREA (SQ . MT.)	TOTAL AREA (SQ . FT.)
4 BHK PREMIUM	175.99	17.74	193.73	2085



Note: The Trees as shown are for representation purposes only. Actual size may vary. Buildings in background are for placeholders only. All furniture, accessories, paintings, electronic goods, additional fittings/fixtures, decorative elements, false ceilings, finishes, materials, specifications, shades, sizes, colours of tiles and other details depicted in the images are purely indicative and for illustrative purposes only. These representations are intended to convey a possible design concept and layout and do not constitute part of the standard specifications, amenities or offerings. The final delivered product may vary in design, materials, dimensions and execution.

Actual sizes may vary for representation purposes only.

## 4 BHK LUXURY RESIDENCES WHERE BALCONIES EXTENDED INTO THE SKYLINE

Crafted by design, bathed in natural light  
and open to the breeze, overlooking the city skyline.

**A Class Above** in every sense.

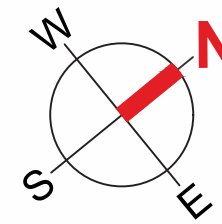
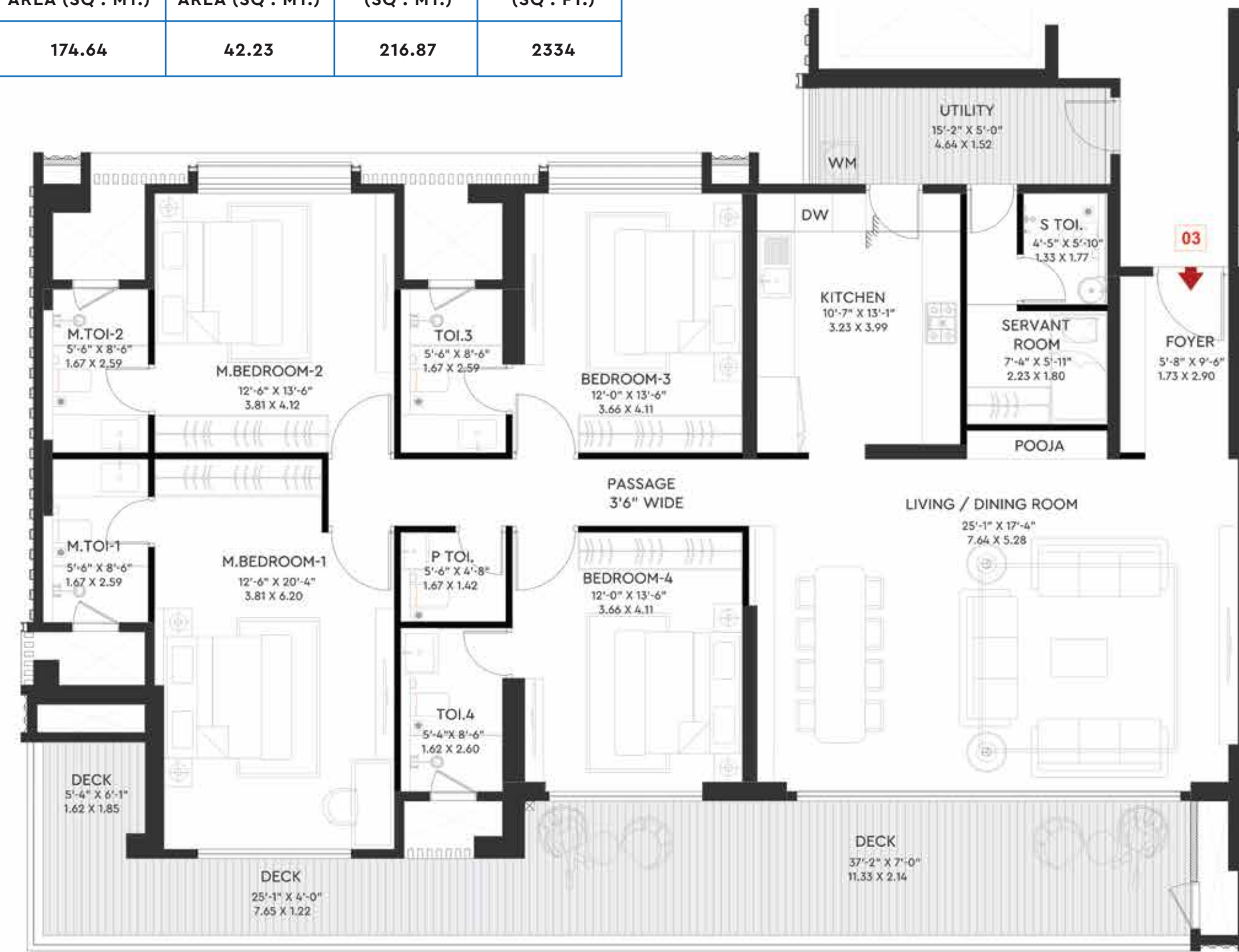


Note: The trees as shown are for representation purposes only. Actual size may vary. Buildings in background are for placeholders only. All furniture, accessories, paintings, electronic goods, additional fittings/fixtures, decorative elements, false ceiling finishes, materials, specifications, shades, sizes, colours or tiles and other details depicted in the images are purely indicative and for illustrative purposes only. These representations are intended to convey a possible design concept and layout and do not constitute part of the standard specifications, amenities or offerings. The final delivered product may vary in design, materials, dimensions and execution.

Actual dimensions used for representation purposes only.

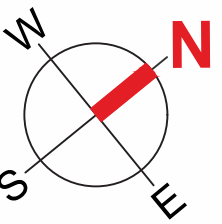
# UNIT TYPE: 4 BHK LUXURY

AREA AS PER RERA				
UNIT TYPE	RERA CARPET AREA (SQ . MT.)	EXCLUSIVE AREA (SQ . MT.)	TOTAL AREA (SQ . MT.)	TOTAL AREA (SQ . FT.)
4 BHK LUXURY	174.64	42.23	216.87	2334



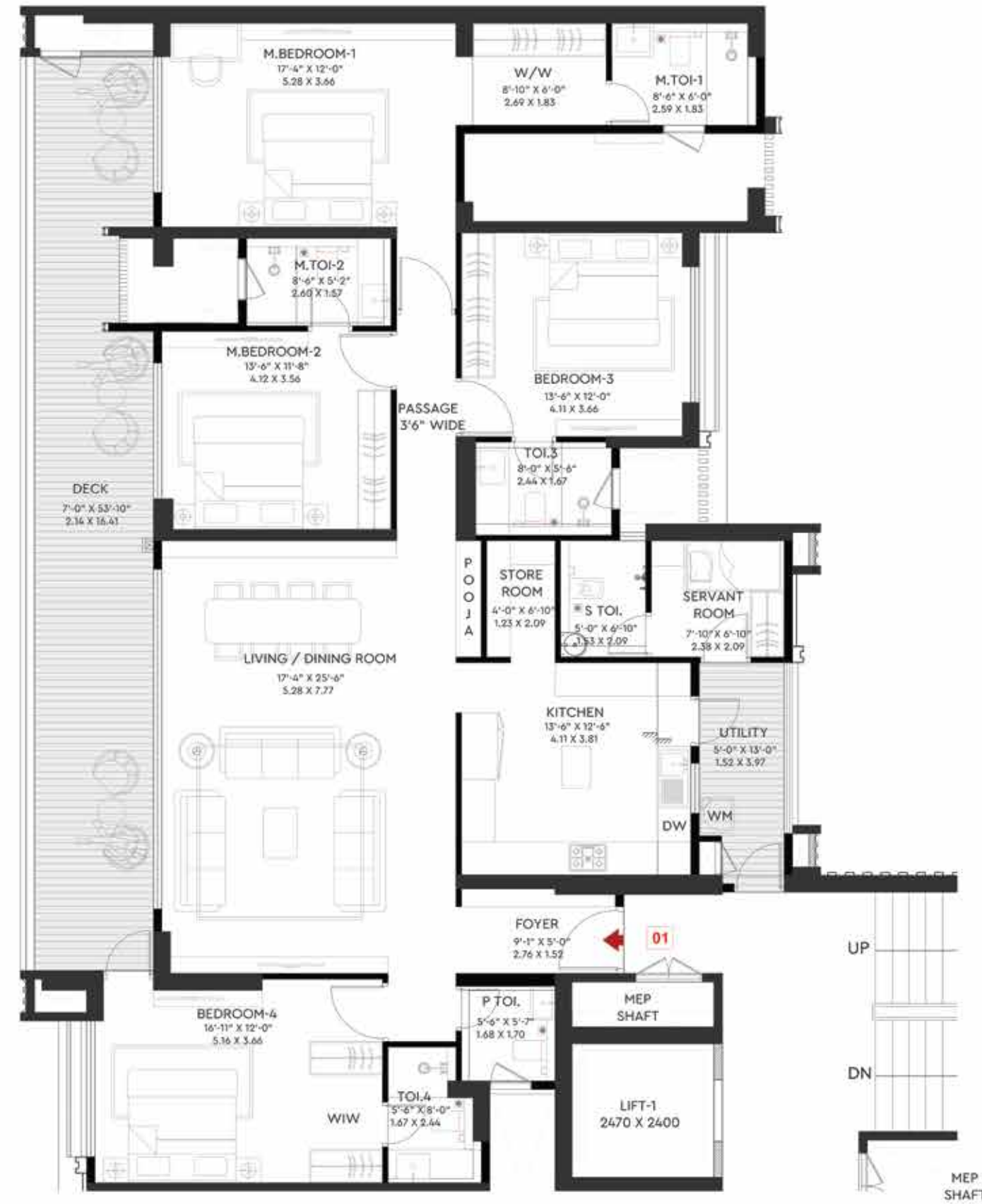
# UNIT TYPE: 4 BHK LUXURY

AREA AS PER RERA				
UNIT TYPE	RERA CARPET AREA (SQ . MT.)	EXCLUSIVE AREA (SQ . MT.)	TOTAL AREA (SQ . MT.)	TOTAL AREA (SQ . FT.)
4 BHK LUXURY	181.55	39.52	221.07	2380

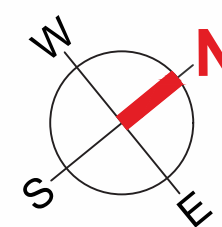


# UNIT TYPE: 4 BHK LUXURY

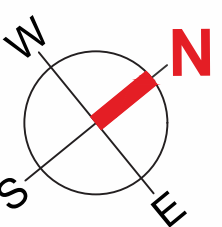
# UNIT TYPE: 4 BHK LUXURY



AREA AS PER RERA				
UNIT TYPE	RERA CARPET AREA (SQ . MT.)	EXCLUSIVE AREA (SQ . MT.)	TOTAL AREA (SQ . MT.)	TOTAL AREA (SQ . FT.)
4 BHK LUXURY	183.54	39.99	223.53	2406



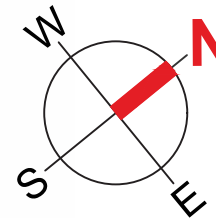
AREA AS PER RERA				
UNIT TYPE	RERA CARPET AREA (SQ . MT.)	EXCLUSIVE AREA (SQ . MT.)	TOTAL AREA (SQ . MT.)	TOTAL AREA (SQ . FT.)
4 BHK PREMIUM	187.09	41.2	228.29	2457



# UNIT TYPE: 4 BHK LUXURY



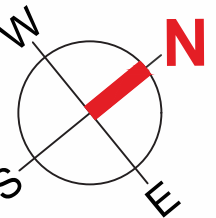
AREA AS PER RERA				
UNIT TYPE	RERA CARPET AREA (SQ . MT.)	EXCLUSIVE AREA (SQ . MT.)	TOTAL AREA (SQ . MT.)	TOTAL AREA (SQ . FT.)
4 BHK LUXURY	189.38	32.33	221.71	2386



# UNIT TYPE: 4 BHK LUXURY



AREA AS PER RERA				
UNIT TYPE	RERA CARPET AREA (SQ . MT.)	EXCLUSIVE AREA (SQ . MT.)	TOTAL AREA (SQ . MT.)	TOTAL AREA (SQ . FT.)
4 BHK LUXURY	192.02	33.31	225.33	2425



# SPECIFICATIONS

<b>FLOORING</b>	Living / Dining/ Bedrooms	Marble / stone / equivalent stone
	Passages	Stone / GVT / vitrified tiles* equivalent
	Entrance Lobby	Marble / stone / equivalent stone
	Balcony	Wooden finish vitrified tiles* / equivalent tiles*
<b>WALL FINISHING</b>	External	Acrylic texture paint / cladding etc.
	Internal	Gypsum plaster / equivalent
	Lift lobby	Paint finish
<b>LIFT</b>	Residential	3 nos. of lifts each in Tower 1, 2, 3 & 4
	Retail	1 lift in Tower 1 & 1 lift in Tower 4 for retail shops of first floor
<b>KITCHEN</b>	Flooring	Vitrified tiles* / equivalent tiles*
	Wall Finishes	Gypsum plaster / equivalent
	Kitchen Counter	Quartz / engineered stone / equivalent stone
	Fittings	Stainless steel sink
	Dado	Designer tiles* / equivalent tiles* above platform upto 2 feet
	Others	Electric point for RO, exhaust fan & washing machine Plumbing provision in wash area
<b>DOORS</b>	Main door	Pre-hung doors
	Internal doors	Pre-hung doors

<b>WINDOWS</b>	All rooms	UPVC windows / Aluminium windows / equivalent
<b>TOILETS</b>	Flooring	Antiskid tiles*/ Designer tiles / equivalent tiles*
	Dado	Antiskid tiles*/ Designer tiles / equivalent tiles*
	Fittings	Wall mounted EWC
		Undercounter basins TOTO / Grohe / equivalent fittings Electrical & plumbing provision for Geyser
<b>ELECTRICALS</b>	Wires	Concealed copper wiring
	Switches	Modular switches from Legrand / Schneider or equivalent
	AC Points	AC points in bedroom and living room
	TV Points	TV points in bedroom and living room
<b>POWER BACK-UP</b>		DG back-up for lift and common areas
<b>SPECIAL FEATURES</b>		Smart Door Lock Video Door Phone
<b>SAFETY FEATURES</b>		Parapet wall, Glass railing for unit balcony / etc.

\* The following are the tolerable limits for materials. The Developer shall not be held liable for the said limits.

i. Tiles: +/- 3mm in warpage & bend.

ii. Marble & Stone: They are natural stones, so there may be variations in thickness / colors / shades and / or grains.

# A BOULEVARD OF EVERYDAY LUXURY

INTRODUCING

## #AltusRow

AT



Everyday convenience, meticulously elevated. A considered blend of daily essentials and lifestyle experiences, thoughtfully brought together in one destination.

Retail envisioned with purpose, where everything you need is always just moments away and living feels seamlessly refined.



Note: The Trees as shown are for representation purposes only. Actual size may vary. Buildings in background are for placeholders only.

Artist's impression used for representation purposes only.

# REDEFINING EVERYDAY CONVENIENCE

Where daily life finds a more seamless rhythm.  
An address where essentials and indulgences coexist with  
quiet precision, bringing together the familiar and the  
exceptional in perfect balance.

Here, retail becomes a considered experience,  
crafted to complement a life that moves with ease and lives  
above the ordinary.



Note: The trees as shown are for representation purposes only. Actual size may vary. Buildings in background are for placeholder only.

Artistic impression used for representation purposes only.



## THE GODREJ STANDARDS OF QUALITY



### HIGH-QUALITY, CERTIFIED STEEL HELPS BUILD STRONG AND EARTHQUAKE-RESISTANT STRUCTURES.

- Opting for Steel conforming to IS 1786. Also, opting for Steel conforming to IS 13920 for earthquake shock resistance.
- One Grade higher concrete with advanced aluminium formwork technology.



### PROVISION OF MICRO-CONCRETE BAND IN WATERPROOFING AND EPOXY GROUTING IN TILES.

- Providing micro-concrete band at the junction of wet areas such as toilets, balconies, utilities and the adjacent rooms to prevent water seepage from wet to dry areas through tile bedding mortar.
- Spacers & epoxy grouting provided for wet areas as a secondary layer of protection against seepage.



### WATERPROOF CHEMICAL COATING UPTO A HEIGHT OF 1.5 M IN SHOWER AREAS OF WASHROOMS, 5 TIMES THAT OF INDUSTRY STANDARDS.

- 2 coats of single component – Waterproofing coat provided to all wet areas.
- While the industry standard for chemical coating is limited to a height of 0.3 meters, Godrej Properties provides waterproof chemical coating up to 1.5 meters in shower areas and behind all ledge walls, covering their entire height.



### USING HEAT-STRENGTHENED PERFORMANCE GLASSES.

- All glasses in windows are heat-strengthened.
- All glasses in SS glass railing are toughened laminated glass.
- Performance glass as per IGBC Silver rating requirements given for better thermal performance.



### PROVISION OF CONCEALED SECONDARY DRAIN SPOUT TO DRAIN ACCIDENTALLY SEEPED WATER.

- Prevents water leakage in wet areas like washrooms.
- Spout is provided in washrooms and utilities to direct water percolating through bedding mortar directly into the drain pipe.



### IN AN INDUSTRY-FIRST PRACTICE, DAMP PROOFING DONE TO ENSURE NO SEEPAGE OR DAMPNES.

- Damp proof course applied on external dead walls prior to texture and paint.
- Shower test done on external dead walls to rule out any seepage.